



Japan Research Centre

ANNUAL REVIEW

ISSUE 64: September 2013 - August 2014



SOAS
University of London

Japan
Research
Centre

Letter from the Chair

outgoing

Dr Stephen Dodd: 2011-2014

All academics like to complain, with some justification, about the heavy burden of administrative tasks they are asked to perform. However, Stephen can honestly say that it has been a real pleasure to serve as JRC Chair during the last three years. He attended most of the weekly JRC lectures, and has never ceased to wonder at the endless ways in which people are able to imagine and interpret Japan. Steve has learnt so much that goes far beyond the narrow limits of his own particular area of academic interest. It may be true that all good things come to an end, but at least in his case this ending arrives with a certain sense of gratitude.

One particular cause for gratitude is the fact that Dr Christopher Gerteis has agreed to take on the role as new JRC Chair. Chris is endowed with an endless supply of enthusiasm and ideas, and Steve has no doubt that he will do a great job in building upon and continuing to push forward our JRC achievements. Steve would also take the opportunity to thank the outgoing members of the JRC steering committee (Timon Screech and Andrew Gerstle) and welcome the incoming members (Griseldis Kirsch, Fabio Gygi, Helen Macnaughtan and Jane Savory) who he's sure will offer excellent advice and support to the new Chair in the new academic year.

A lot has been happening at the JRC this last year. The most obvious development has been the intensification of our fundraising efforts. For this, Steve thanks not only Chris and other members of the JRC committee for their enthusiasm and commitment, but also Naaz Adatia and Linda Pistis from the Development Office, who have tirelessly sought to identify ways of promoting Japanese studies to the wider community. One major highlight this year was the inauguration of the William Beasley (that's Beasley, not Sibley!) Annual Memorial Lecture in early December, when we invited VIP guests to a lecture from Prof. William Marotti. Prof. Marotti visited us from the University of California, Los Angeles, to entertain a packed audience in the Khalili Lecture theatre with a fascinating talk on 'Timely and Untimely Politics: Art and Protest in Early 1960s Japan.' The combined efforts of many JRC members that evening ensured the smooth running of the event. Our fundraising is still in its initial stages, but Steve is delighted to say that already the Toshiba International Foundation has very kindly donated £5,000 towards next year's Beasley lecture.

Our other special lectures during the year also attracted large audiences. Professor Sharalyn Orbaugh, from the University of British Columbia, was our speaker for the Meiji Jingu Lecture in October 2013, when she compared experiences of war in Japan and Britain in a talk entitled 'Mobilizing



the Home Front: Japanese and British Domestic Propaganda in World War Two.' The speaker for the Tsuda Lecture in February 2014 was Prof. Andrew Gordon, the distinguished professor of history at Harvard University, who spoke about the social, political and economic changes that took place in Japan during the 1990s in a talk entitled 'Making Sense of Japan's Lost Decades.'

The JRC was involved in various other major events that came our way during the year. For instance, we gave support to Japan400, a series of events headed by Prof. Screech in celebration of the 400th anniversary of relations between Japan and Britain. The JRC was also pleased to lend support to Prof. Gerstle's ground-breaking project on Japanese erotic prints (Shunga). In addition, our regular Wednesday evening seminars have continued to attract large crowds. Topics this year have ranged from the music of ancient Greece in modern Japan, to the role of the Chinese calendar in ancient Japan, to the state of Japanese literature since 3/11.

Not everything is rosy. We are concerned about the rising cost of bench fees for visiting scholars mostly from Japan. Also, there is some discussion of the role of Research Associates within the JRC and other centres at SOAS. Personally speaking, while Steve can see some value in cutting back on the number of JRC Research Associates we have at the moment (we have lots!) he is sure the Associates would be very happy to participate more deeply in the JRC research environment by taking part in workshops and giving occasional lectures.

Steve thanks this year's visiting scholars who have attended our weekly talks so assiduously, and he welcomes those visitors who have recently arrived. Finally, he offers a heartfelt thanks to Jane, Dorinne and Rebecca in the Centres & Programmes Office for their constant professionalism and willingness to help. And while we are at it, a big thank you to all JRC members who have participated so unstintingly in lively post-lecture discussions and even more lively post-lecture dinners during the past three years. It has been a pleasure working with you.

SOAS ジャパンリサーチセンター (以下 JRC) 所長であり SOAS にて日本学の講義を担当する Stephen Dodd 博士は、同センターの所長を三年間 (2011年9月-2014年8月) 務められたことは非常に光栄なことであったと振り返る。氏は JRC の毎週の講演会にほぼ全て出席してきたが、研究者が日本を解釈し説明しようとする観点や方法の多様さと豊富さに改めて感銘を受けてきたと語る。

氏の所長任期最終年度の今年、JRC では多くの催しが行われた。ハイライトの一つは10月の「明治神宮秋講義」で幕を開けた特別講義シリーズである。講演者はブリティッシュコロンビア大学教授 Sharalyn Orbaugh 博士であり、日本と英国の戦争体験の比較について講演された。また12月には William Beasley 記念講演を行い、JRC の基金募集活動に力を入れた。カリフォルニア大学の William Marotti 教授をお迎えし『1960年代初期の日本における芸術とプロテスト』と題した素晴らしい講演を聴く機会を得た。さらに2月にはハーバード大学を代表する歴史学教授 Andrew Gordon 博士が津田レクチャーで講演された。

また同センターは、Timon Screech 教授の主導する JAPAN400 (日英交流400周年記念) と称される一連のイベントを協賛してきた。さらに Andrew Gerstle 教授の革新的な「春画」プロジェクトの後援も行った。

他の成果としては、Jonathan Service 博士編集による「SOAS 日本学翻訳刊行物」が挙げられる。本企画によって研究者および翻訳者は、未訳の日本に関する優れた作品に触れる機会を得てきた。また、1年間の「日本語集中講座」が今年からはオプションとして SOAS の修士課程に組み込まれることとなり、希望する学生は日本語講座付修士課程 (2年) を選ぶことができるようになった。ブルームズベリ出版刊行の SOAS 現代日本研究シリーズでは間もなく最初の三冊が出版される予定である。また今年 JRC が、Helen Macnaughtan 博士召喚による欧州エグゼクティブ日本研修プログラムの母体組織となって三年目の年でもあった。

同センターの次期所長を向こう三年間、SOAS で現代日本の歴史の講義を担当する Christopher Gerteis 博士が務めることに決まった。JRC においては現在予算豊富でまた会員数も増加しつつあり、これまでになく教授、研究ともに質の充実を見るこの時期に、所長の任を引き受けることは有難く、幸運なことだと Gerteis 博士は語った。



Dr Christopher Gerteis: 2014-2017

Christopher is pleased to be taking on the JRC Chairship, and wants to thank Dr Stephen Dodd for his terrific stewardship of the Centre these past three years. He feels lucky to be taking on the Centre when the budget is in surplus, our membership growing, and the quality of our teaching and research at an all-time peak.

The SOAS Occasional Translations in Japanese Studies, edited by Dr Jonathan Service, continues to provide opportunities for scholars and translators to highlight fine works on Japan never before available in English; the SOAS Studies in Modern and Contemporary Japan series, published in association with Bloomsbury, will

release its first three books (including one by Dr Griseldis Kirsch) in academic year 2014-2015; next year is our third year as the host institution for the European Commission's Executive Training Program convened by Dr Helen Macnaughtan; and our expansion of postgraduate training gather pace with the inaugural year of the year-long 'Intensive Japanese' option now offered as an bolt-on option for nearly all MA/MSc programs at SOAS, further augmented by a growing complement of scholarships and bursaries for both Taught Masters and Research Students.

These are but a very few of our collective accomplishments, and Chris looks forward to the opportunity to share even more. He is particularly interested in hearing from each of you about ideas for programming, curricular and funding initiatives. Indeed, we thrive because you do – and he wants the JRC to be your go-to place to help make your ideas into reality.

Dr Christopher Gerteis is Senior Lecturer in the History of Contemporary Japan and in-coming Chair of the Japan Research Centre at SOAS, University of London. A graduate of the University of California at Santa Cruz (BA History) and the University of Iowa (PhD Modern Japanese History), he is author of *Gender Struggles: Wage-earning Women and Male-Dominated Unions in Postwar Japan* (Harvard University Press, 2009); co-editor of *Japan since 1945: from Postwar to Post-Bubble* (Bloomsbury, 2012); and editor of *Critical Readings on the History of Industrialization in Modern Japan* (Brill, 2012).

incoming

Academic Staff

One of the largest concentrations of Japan specialists outside Japan

ANTHROPOLOGY

Dr Fabio R GYGI
Lecturer in Anthropology
Expertise: Anthropology of Japan, material and visual culture, medical anthropology, popular culture, gender, embodiment and performance
fg5@soas.ac.uk

ECONOMICS

Professor Costas LAPAVITSAS
Professor of Economics
Expertise: Japan: theory of banking and finance; history of economic thought; the Japanese financial system
cl5@soas.ac.uk

Mr Satoshi MIYAMURA
Lecturer in Economy of Japan
Expertise: Development economics, labour economics, Institutional economics, labour-management bargaining; Research methods in economics
sm97@soas.ac.uk

Dr Ulrich VOLZ
Senior Lecturer in Development Economics
Expertise: East Asian financial markets; open economy macroeconomics, financial market development and stability, development and transition economics
uv1@soas.ac.uk

FINANCIAL AND MANAGEMENT STUDIES

Ms Yoshkio JONES
Teaching Fellow in Financial and Management Studies
yj1@soas.ac.uk

Dr Helen MACNAUGHTAN
Lecturer in International Business and Management (Japan)
Expertise: Employment, human resource management, gender and economic development in Japan
hm39@soas.ac.uk

Ms Sonja RUEHL
Fellow in Financial and Management Studies
Expertise: Financial sector development in Japan and Vietnam, gender issues in financing development, microfinance institutions in Vietnam
sr2@soas.ac.uk

Dr Yoshikatsu SHINOZAWA
Senior Lecturer in Financial Studies
Expertise: Equity, investment, asset management, corporate finance
ys6@soas.ac.uk

HISTORY

Dr Christopher GERTEIS
Senior Lecturer in History of Contemporary Japan
Expertise: Modern and contemporary Japanese history, especially the intersection of consumer capitalism and historical memory; social and cultural history of the 20th century; work and gender
cg24@soas.ac.uk

Dr Angus LOCKYER
Lecturer in the History of Japan
Expertise: Modernisation and modernity in Japan; world's fairs, international and industrial exhibitions
al21@soas.ac.uk

HISTORY OF ART AND ARCHAEOLOGY

Dr Meri ARICHI
Senior Teaching Fellow
Expertise: Buddhist Art, Religious syncretism in medieval Japan
ma70@soas.ac.uk

Professor Timon SCREECH
Professor of the History of Art
Expertise: History of Japanese art; Edo painting; contacts between Japan and Europe in the 18th century; history of science in Japan; the theory of art history
ts8@soas.ac.uk

LANGUAGES AND CULTURES OF JAPAN AND KOREA

Dr Alan CUMMINGS
Senior Teaching Fellow in Japanese
Expertise: Pre-modern language, literature, and drama; Tokugawa theatre and popular culture; the history and aesthetics of Japanese post-war popular culture and subculture
ac50@soas.ac.uk

Dr Stephen H DODD
Senior Lecturer in Japanese / Chair of Japan Research Centre
Expertise: Modern Japanese literature, with particular interest in representations of the native place (furusato), gender/sexuality and modernity
sd5@soas.ac.uk

Dr Akiko FURUKAWA
Principal Lecturer in Japanese
af15@soas.ac.uk

Professor Andrew GERSTLE
Professor of Japanese Studies
Expertise: Japanese literature drama and thought, primarily of the Tokugawa period, with particular interest in Bunraku and Kabuki theatre and the plays of Chikamatsu
ag4@soas.ac.uk

Ms Misako KANEHISA
Senior Lecturer in Japanese
mk7@soas.ac.uk

Mrs Miwako KASHIWAGI
Senior Lecturer in Japanese
mk56@soas.ac.uk

Dr Griseldis KIRSCH
Lecturer in Contemporary Japanese Culture
Expertise: Contemporary Japanese culture with particular interest in television; representation of "Otherness" within the fictional media genre
gk10@soas.ac.uk

Dr Barbara PIZZICONI
Reader in Applied Japanese Linguistics
Expertise: Japanese applied linguistics; language teaching methodology; second language acquisition with emphasis on pragmatic aspects; linguistic politeness
bp3@soas.ac.uk

Dr Nana SATO-ROSSBERG
Lecturer in Translation Studies
ns27@soas.ac.uk

Dr Isolde STANDISH
Reader in Film and Media Studies
Expertise: Film and media studies with a special interest in Japan and Korea, World Cinema and the Transcultural
is16@soas.ac.uk

Mrs Kaori TANIGUCHI
Senior Lecturer in Japanese
kt16@soas.ac.uk



JRCは、日本国外における日本学専門家の最大規模の組織の一つであり、会員の研究専門分野は 人類学、芸術、経済学、地理学、歴史学、文学、法学、メディア学、音楽、言語学、政治学、社会学、と多岐にわたる。

LIBRARY AND INFORMATION SERVICES

Ms Fujiko KOBAYASHI
Librarian (Japan and Korea)
fk2@soas.ac.uk

LINGUISTICS

Dr Noriko IWASAKI
Senior Lecturer in Language Pedagogy; Chair for Centre for Language Pedagogy
Expertise: Psycholinguistics, second language acquisition, language pedagogy
ni3@soas.ac.uk

POLITICS AND INTERNATIONAL STUDIES

Dr Yuka KOBAYASHI
Lecturer in Chinese Politics
Expertise: China and international politics; WTO; environment and human rights
yk37@soas.ac.uk

Dr Kristen SURAK
Senior Lecturer in Japanese Politics
Expertise: International migration, nationalism, ethnicity, culture, state and society in Japan, qualitative sociology
kristin.surak@soas.ac.uk

STUDY OF RELIGIONS

Professor Timothy H BARRETT
Research Professor of East Asian History
Expertise: History of Chinese religion, notably Taoism and Buddhism; pre-modern Chinese history, especially the Tang period
tb2@soas.ac.uk

Dr Lucia DOLCE
Reader in Japanese Religion and Japanese
Expertise: Japanese religious history, especially the medieval period; Japanese Tantric Buddhism and the esotericisation of religious practice; Millenarian writings and prophecy; Kami-Buddhas associations
ld16@soas.ac.uk

Mr Tullio LOBETTI
Senior Teaching Fellow
Expertise: Study of religion in Japan
tl3@soas.ac.uk

Academic Members News

Highlights from the academic year

Stephen DODD
Senior Lecturer in Japanese
Chair of Japan Research Centre



In July 2013, Stephen examined a PhD candidate at a viva at the Universitat Rovira i Virgili, Tarragona, Spain. In October, Steve took part in a conference at the Universidad

Autónoma de Madrid, presenting a paper 'Translating Cultures Across Cultures: The Case of Kajii Motojirō.' In November, Steve visited the University of British Columbia, Vancouver, where he examined a PhD candidate. He also examined two other PhD candidates in the UK: one Cambridge student in November 2013, and one Oxford student in January 2014. In April 2014, Steve attended a conference, Soseki's Diversity, in Ann Arbor, Michigan, where he gave a paper 'The Translation of Same-Sex Desire in Kokoro.' In the same month, he chaired a student panel at the BAJIS Postgraduate Conference at SOAS.

Steve was delighted to be appointed co-editor of Japan Forum for a three-year term beginning September 2014. In early 2014, his book *The Youth of Things: Life and Death in the Age of Kajii Motojirō* came out, and a book launch was held at the Japan Foundation, London, in May 2014. In March 2014, he took part in the CCLPS panel discussion on Contemporary Cultures of Opposition in East Asia, presenting a paper 'The Struggle Towards a Gay Male Identity in 1920s Japanese Literature.' During academic year 2014-15 he will be on sabbatical at Sophia University, Tokyo, for the entirety of the year. He will begin a new area of research, examining aspect of same-sex desire in Japanese literary texts from the perspective of translation studies.

PUBLICATIONS

Dodd, Stephen. *The Youth of Things: Life and Death in the Age of Kajii Motojirō*, Honolulu: University of Hawai'i Press, 2014.

Dodd, Stephen. "Structures of colonialism in Itō Sei's 'Yūki no machi,'" in *Bulletin of SOAS*, 76, 3 (2013), pp.449-466.



Lucia DOLCE
Numata Reader in Japanese Buddhism



Lucia continued to work on her current three research projects and was invited to present her findings at a number of venues across the globe.

In October she gave a lecture on the tantric Lotus Sutra at the Centre for Buddhist Studies in Oxford and delivered a paper on "The ritual collections of medieval Japan: A performative approach to encyclopaedic knowledge?" at the international conference on Buddhist encyclopaedias held at College de France, Paris (24-25 October 2013). In November she gave a talk on "Embryology and Tantric Rituals from Mediaeval Japanese Manuscripts" at the Anthropology Research Group on Eastern Medicines and Religions (ArgO-EMR), Oxford and spoke at the CSJR Ise sengu workshop on the iconography of Amaterasu. In January 2014 she spent ten days in Japan, to take part in an international workshop on The Making of Religions and Religious Representations in Pre-Modern Japan at Kyushu University, where she gave a paper on shinbutsu ritual iconography, and to do some fieldwork in the Kunisaki peninsula.

In the spring at SOAS Lucia organized the annual workshop of the international project Interactions between Rivals: the Christian Mission and Buddhist Sects in Japan during the Portuguese Presence, funded by the Portuguese Foundation for Science and Technology, of which she is a member. Later in the month she presented her latest finding on Buddhist embryology at Columbia University and attended the AAS in Philadelphia.

In June Lucia spent two weeks in Korea by invitation of Dongguk University, the oldest Buddhist university in the country, to discuss a joint project on the interactions of Japanese and Korean Buddhism to be carried out in the next three years at Dongguk and SOAS. She also gave an invited lecture at Seoul National University on medieval Buddhist iconography.

In summer Lucia will attend the conference of the International Association of Buddhist Studies in Vienna (18-23/8) and the triennial conference of the European Association of Japanese Studies in Ljubljana (27-30/8), where she will chair a panel organised together with a Japanese research team and will present a paper on the visual effects of meditative practices.

Lucia has been elected to the board of the European Consortium for Asian Field Study (ECAAF) for the 2014-17 term.

PUBLICATIONS

Lucia Dolce, "Hokekyō to mikkyō," [The Tantric Lotus Sutra] in *Hokekyō to Nichiren*, vol. 1 of *Shirizu Nichiren*, 5 vols, Komatsu Hōshō and Hanano Jūdō, eds, Tokyo: Shunjūsha, 2014, pp. 268-293.

Lucia Dolce, "The Practice of Religion in Japan: An Exploration of the State of the Field," in *Handbook of Modern Japanese Studies*, James Babb ed., Sage Publications, 2014 (in press).

Lucia Dolce, "The Embryonic Generation of the Perfect Body: Ritual Embryology from Japanese Tantric Sources," in *Embryology and (Re)Birth in East Asian Religions*, Anna Andreeva and Dominic Steavu, eds. Leiden: Brill (Sir Henry Wellcome Asian Series), forthcoming.

Andrew GERSTLE
Professor of Japanese Studies



This past year was busy for Andrew Gerstle, with the culmination of the four-year international project on 'Shunga Japanese erotic art and literature', which was supported by

the Leverhulme Trust, in collaboration with the British Museum, International Research Center for Japanese Studies, Kyoto, and Ritsumeikan University.

The exhibition at the British Museum, 'Shunga: Sex and Pleasure in Japanese Art' ran from 3 October 2013 to 5 January 2014, and was both a critical and popular success with just under 90,000 visitors, many more than expected.

The catalogue of the same title has 536 pages in full colour and is in its second edition. A special issue on 'Shunga' of the journal *Japan Review* (no. 26) also came out in 2013. The catalogue will be published in Japanese in 2015. The exhibition received wide media attention including extensive coverage in Japan, with the most notable being a special issue of monthly art magazine *Geijutsu Shinchō*, with a 70-page article on the British Museum 'Shunga' exhibition.

Many commentators asked why it was that Japan was yet to host such an exhibition. There were two symposia in connection with the exhibition supported by the JRC in collaboration with the British Museum: 'Sex Art in Japan: Perspectives on Shunga' (4-5 October 2013) and 'Shunga & Philosophy' (19 Dec 2013), in collaboration also with the Aesthetics Research Centre at the University of Kent.

Gerstle will be on leave during 2014-15, and based at the International Research Center for Japanese Studies in Kyoto.



『春画—日本芸術における性と快楽』と題された展覧会が、2013年10月から2014年1月まで大英博物館で開催されました。9万人という予想を上回る来場者を得ることができ、高い評判と人気を博しました。

PUBLICATIONS

Gerstle, Andrew (co-editor with T Clark, A Ishigami and A Yano), *Shunga: Sex and Pleasure in Japanese Art*, *British Museum Press*, 2013, 536 pp.

Gerstle, Andrew (co-editor with T Clark), *Shunga: Sex and Humor in Japanese Art and Literature*, special issue of *Japan Review*, no. 26, 2013, 280 pp.

Gerstle, Andrew (trans.) *Shunga: Ten Questions and Answers*, author Monta Hayakawa, *Nichibunken Monograph Series*, no. 14, Kyoto: *International Research Center for Japanese Studies*, 2013, 121 pp.

Gerstle, Andrew, 'Analysing the Outrageous: Takehara Shunchōsai's Shunga Book, 'Pillow Book for the Young' (1776) Makura dōji nukisashi manben tamaguki', (special issue) *Japan Review*, no. 26 2013, pp. 169-193.

Academic Members News

Highlights from the academic year

Christopher GERTEIS
Senior Lecturer in History of Contemporary Japan



PUBLICATIONS

Gerteis, Christopher and George, Timothy S (2014) 'Beyond the Bubble, Beyond Fukushima: Reconsidering the History of Postwar

Japan / バブルのかなた、福島のかなたとは 戦後日本史再考.' *The Asia-Pacific Journal*, 12 (8.3).

Gerteis, Christopher (2013) 'Political Protest in Interwar Japan: Posters & Handbills from the Ohara Collection (1920s-1930s).' In: Dower, John W and Miyagawa, Shigeru, (eds.), *Visualizing Cultures: Image-Driven Scholarship*. Cambridge, Mass.: Massachusetts Institute of Technology OpenCourseWare Initiative.

Gerteis, Christopher (2013) '「衰退してゆく労働組合員—戦後労働運動における階級とジェンダー」.' In: フリューシュトゥック, サビーネ and ウォルツール, アン and 長野, ひろ子, (eds.), 日本人の「男らしさ」—サムライからオタクまで 「男性性」の変遷を追う. 東京: 明石書店, pp. 130-149.

Fabio GYGI
Lecturer in Applied Japanese Linguistics



Fabio joined the SOAS department of anthropology and sociology in September 2013 after three years as an assistant professor in sociology at the Doshisha. He is

currently teaching "Culture and Society of Japan", "Anthropology of Media" and "Social Theory", with a co-taught course on the anthropology of mind and a new module on sexualities in the making.

Fabio Gygi氏が2013年9月よりSOAS人類学・社会学部教員スタッフの一員となりました。氏は同志社大学で三年間、社会学部助教として教鞭を取っておられました。

He gave a talk on hoarding in Japan at the University of Manchester in October ("Animate to Kill?"), and a lecture at the JRC on "Thing Beliefs: Hoarding and the Art of getting Rid of Stuff in Contemporary Japan" in January 2014.

As he had to abandon a whole cohort of Japanese students mid-term when moving to London, he spent reading week in Kyoto teaching a one week intensive course and gave the annual department of sociology lecture at Doshisha university.

Fabio has joined the steering committee of the JRC in April 2014 and will spend most of the summer in Japan writing on the manuscript of his present publication project. He will present new research at the EAJS conference in Ljubljana in August.

Griseldis KIRSCH
Lecturer in Contemporary Japanese Culture



In 2013/14, Griseldis was Associate Dean for Taught Masters' programmes in the Faculty for Languages and Cultures. She attended the symposium 'Rediscovering the

Diva. Considering the Impact of Female Star Personae on Japanese Film and Visual Media' in June 2013 with a paper on Japanese television tarento. At the Open Docs Festival in June 2013, she chaired a discussion with director Atsushi Funahashi on his film 'Nuclear Nation'.

In October, she attended a workshop at Birkbeck and on 6 February, she was invited to give a talk at the University of Cardiff, speaking on 'Bringing the past to the present - Japanese television and public memories of the Pacific War'.

She convened section 5b - Media Studies for the European Association of Japanese Studies conference in Lyublyana/Slovenia in August.

PUBLICATIONS

Gössmann, Hilaria and Kirsch, Griseldis (2014). 'Crossing Borders, Building Bridges: 'Asian Stars' in Japanese TV Drama.' In: Kim, Jeongmee, (ed.), *Reading Asian Television Drama: Crossing Borders and Breaking Boundaries*. London: I.B. Tauris, pp. 147-168.

Kirsch, Griseldis. 'Next-Door Divas. Japanese Tarento, Television and Consumption.' in: *Journal of Japanese and Korean Cinema*, forthcoming July 2014.

Kirsch, Griseldis. Contemporary Sino-Japanese Relations on Screen. A History, 1989-2005. *SOAS Studies in Modern and Contemporary Japan*. London: Bloomsbury, forthcoming 2015.

Angus LOCKYER
Lecturer in the History of Japan



Angus spent most of the year writing and teaching, including a new course for final-year history students, 'Urban Modern Eastern Asia', which placed Tokyo in comparison with

Manila, Shanghai, and Singapore, among others. In November he participated in the CSJR workshop on the Ise Shrine and presented a paper in Dusseldorf, 'The Double Bind of Being Japan: What Exhibitions do to Traditions,' at a workshop, 'Lived Traditionalism: Japanese "Traditions" Beyond Invention'.

PUBLICATIONS

Lockyer, Angus. The Problem of Sovereignty in an Age of Empire: Representing Japan in Paris in 1867. *Critical Asian Studies*, vol. 45, no. 4. December 2013. 615-642.



Helen MACNAUGHTAN
Lecturer in International Business and Management (Japan)



In November 2013 Helen was the Academic Coordinator for Cycle 2 of the EU funded Executive Business Training (ETP) for Japan and Korea. They hosted 40

executives from EU companies for a three-week programme of study relating to Japan and Korea here at SOAS. She will be visiting Waseda and Yonsei Universities in June 2014 to meet with current and past cohorts of ETP executives.

In April 2014 Helen helped the JRC to host the BAJIS Advanced Postgraduate Conference enabling current PhD students to present their research to established academics in various fields of Japanese studies.

This academic year she has been working on a project researching the history of Japanese women's volleyball and its connection to the 1964 Tokyo Olympics and has published two articles on this subject below.

PUBLICATIONS

Macnaughtan, Helen. 'The Oriental Witches: Women, Volleyball and the 1964 Tokyo Olympics' in *Sport in History*, 34:1, p134-156, 2014.

Macnaughtan, Helen. 'The Life and Legacy of Kasai Masae: the Mother of Japanese Volleyball' in *Harvard Asia Quarterly*, 15 (No.3/4), p38-46, 2013.

Barbara PIZZICONI
Reader in Applied Japanese Linguistics



Following the conference 'Teaching and Learning (Im) politeness' organised at SOAS in July 2013, Barbara worked on an edited collection (with Prof. Miriam Locher, Basel

University) including selected papers from the conference as well as additional invited contributions. Her own contribution looks at the way '(im)politeness' is conceptualised in the Common European Framework of Reference (CEFR) and how this can be translated into classroom practice.

During her sabbatical in term 2 she worked on several other projects, including Japanese modality, politeness and language indexicality.



JRC Steering Committee

- Dr Christopher Gerteis
- Dr Helen Macnaughtan
- Dr Stephen Dodd
- Dr Griseldis Kirsch
- Dr Fabio Gygi
- Mrs Jane Savory



400th Anniversary Japan-British Relations

"The Japan 400 Committee in the United Kingdom presented this telescope and tripod to the people of Japan on 8th September 2013 to commemorate the gift of a telescope from King James to Tokugawa Ieyasu on 8th September 1613, marking the anniversary of diplomatic, trade, scientific and cultural relations".

In June 1613 the *Clove*, a ship dispatched from London by the East India Company, with full control and direction by King James and his Chief Minister Lord Salisbury, and commanded by John Saris, landed at Hirado. Saris was introduced to Tokugawa Ieyasu on 8th September 1613 by William Adams, Miura Anjin, and at this meeting a fine illuminated letter from King James was presented together with various gifts, the principal one being a large silver gift telescope. The telescope had only recently been invented, and this was the first reported to have been dispatched from Europe. The Japanese must have been amazed by such technology, and successive shogun continued to ask for European telescopes. Sadly, the original instrument had been lost and so a hand-made brass telescope was commissioned as a replacement, and a symbol of the start of Britain's valuable partnership with Japan in science and technology.

Timon SCREECH Professor of the History of Art



Timon Screech began the session by organising the conference, Japan Britain 1613. This was the main academic event of Japan400, the celebration of

the start of relations between our two countries, in 1613, which Timon co-chaired. During the course of the 2013-14 academic year Timon travelled extensively in relation to this commemoration, speaking at Bristol, Cambridge, Colmar, Los Angeles, Shizuoka and Tokyo. He was also keynote speaker at the EAJS in Kyoto, and at the Asian Transformations conference in Moscow. Japan400 had over 200 events, including such venues at the Banqueting House, the Guildhall, Hatfield House and the Tower of London. In 1613, Tokugawa Ieyasu was presented with a telescope from King James. This was the first such instrument ever to leave Europe, though it has since been lost. One of Japan400's key events was to replace the instrument with a modern presentation piece, which has been sent as a gift to the people of Japan. It is currently in the British Embassy in Tokyo, but will be moved to Sunpu Castle, where Ieyasu was living when he received it, for it to be kept in perpetuity.

Early 2014 saw culmination of Japan400 with Timon Screech and his co-chair Nicholas Maclean receiving the Japanese Ambassador's Special Commendation for their efforts, and being invited to dinner with HHH the Crown Prince at the British Embassy in Tokyo.

PUBLICATIONS

'A 17th-Century Japanese Minister's Acquisition of Western Pictures: Inoue Masashige (1585-1661) and his European Objects', in, Larissa Förster (ed.), *Transforming Knowledge Orders: Museums, Collections and Exhibitions* (Paderborn: Willem Fink, 2014)

'James issei to Tokugawa Ieyasu, Hidetada to no kenjōbutsu kōkan: Eikoku shijō-hajime no aato ookushonn', [Exchange of Presents Between James I and Tokugawa Hidetada: This first art auction in British history] Kokka 1450 (2013)

'Hiraga Gennai, A Lousy Journey of Love, 1783', 'Comparisons of Cities', 'Outlandish Nonsense: Verses on Western Themes', in, Sumie Jones & Kenji Watanabe (eds.), *An Edo Anthology: Literature from Japan's Mega-City 1750-1850* (Honolulu: Hawaii University Press, 2013)

A view from Governing Body

Since Graham Fry joined the SOAS Governing Body in 2008, there have been some major changes.

The government, for example, has radically changed university financing. But SOAS has continued to advance and expand: it has gained the right to issue its own degrees, it has introduced new courses, and it has embarked on a building project to bring all its operations onto one campus.



What has not changed is the importance of Japanese studies in the School. When he first went to Japan 40 years ago, its rise from the ashes of 1945 was still fresh, and as British industry struggled to compete with Toyota, Sony and the rest, it was fascinating to try to understand how Japan's transformation had come about and what lessons it held for us. Now the economic momentum may have gone, but the study of Japan remains as relevant as ever. We live in a world of financial crashes, ageing societies, energy crises and global competition, and Japan's experience helps to guide policy-makers elsewhere. Moreover, Japan's cultural achievements are attracting a new wave of international interest. We sometimes bemoan Japan's tendency to be inward-looking, but this characteristic may help to explain why Japan has produced such a distinctive artistic tradition and why even now through manga, anime and other creations it continues to fascinate outsiders.

All this and more deserves intensive research, which the JRC is well placed to undertake and which will provide the basis for SOAS's education of the next generation to try and fathom the mysteries of Japan.

日本学研究は従来と変わらぬ重要性を保持しています。現代世界には金融恐慌、高齢社会、エネルギー危機、世界市場での競争といった課題が山積していますが、日本の経験は各国の政策立案者を導く手助けとなると思われます。さらに、日本の文化的業績は今日新たな高まりを見せつつある世界的関心の的となっています。我々研究者には日本の内向的傾向が時に嘆かわしく思われることもあります。しかし、この内向的性質こそが日本がかつて特異の芸術的伝統を生んできたこと、および現代において漫画、アニメ、その他の創作を通じて他国を魅了し続けていることの一つの理由であるとも言えるでしょう。

New MA Programme

MA Japanese Studies and Intensive Language (Japanese)

Duration: 2 yr pathway: full time (2 years) or part time (4 years).

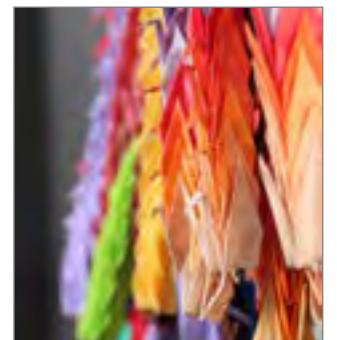
Who is this programme for?:

The two-year language pathway is directed at students who want to engage with Japan in a professional as well as academic way, as the intensive language course would enable them to reach a near proficient knowledge of the language.

Your chosen discipline will be combined intensive Japanese language over two years, therefore making this programme unique in Europe.

May be combined with

- MA Japanese Studies
- MA Korean Studies
- MA Historical Research Methods
- MA History
- MA History of Art and Archaeology of East Asia
- MA Religions of Asia and Africa
- MA Medical Anthropology
- MA Anthropological Research Methods
- MA Migration and Diaspora Studies



Structure

In the two-year language pathway, students take 2 intensive language units and one discipline unit in their first year. During the summer, they will participate in a summer school abroad. Upon their return, they will take one intensive language unit in their second year and two discipline units. They will also be expected to choose a Major in which to write the dissertation. In the intensive-language pathway, the same rules apply as for the usual MA.

In the two-year language pathway, the intensive language courses will be assessed by a combination of exams and continuous assessment, involving in-class tests. The assessment in the summer school is handed over to the partner university but will be counted as one unit.

- Students will acquire a comprehensive understanding of Japan's past and present, within the parameters of the courses and disciplines chosen.
- Students will acquire an advanced understanding of the theoretical and methodological tools of the relevant disciplines.
- Students who choose to take language will improve their knowledge of and ability to use Japanese in their everyday life and, depending on the level achieved, professional career.

www.soas.ac.uk/japankorea/programmes/ma-and-intensive-language-japanese/

Event Listing

2013-2014: includes the annual lectures, conferences and weekly seminars series

SEMINAR SERIES

先に触れたJRC主催の講演会は、毎週40名を超す出席者に恵まれた。参加者には専門分野の知識を深めるだけでなく、日本についての全く新しい見識を得る機会を提供してきた。多岐にわたる本講演の主題は、学際的な日本関連研究のテーマが驚くほど幅広いことを示唆している。

AUTUMN TERM

16 OCTOBER 2013
[Kristin Surak \(SOAS\)](#)
Making Tea Japanese: Nation-Work and Cultural Practices

23 OCTOBER 2013
[Nobuko Anan \(Birkbeck College\)](#)
Girls' Space, Girls' Time: Case Studies from Contemporary Performance and Visual Arts in Japan

30 OCTOBER 2013
[Meghen Jones \(SISJAC Fellow\)](#)
Tomimoto Kenkichi's Porcelain and the Body Politic in Japan, 1920s-1950s

13 NOVEMBER 2013
[David Ambaras \(North Carolina State University\)](#)
Runaway woman, pirate queen: life on the margins of the Japanese empire

20 NOVEMBER 2013
[Rayna Denison \(East Anglia\)](#)
Manga at the Movies: Franchising, Adaptation and Manga's Dominance of Popular Japanese Cinema

27 NOVEMBER 2013
[Professor Michel Vieillard-Baron \(Institut National des Langues et Civilisations Orientales, INALCO\)](#)
Power and Poetry: the Poems for the Sliding Doors of the Saishōshi Tennō-in (1207)

11 DECEMBER 2013
[Dr Alessio Patalano \(King's College London\)](#)
Rising to the Challenge: Inside the Japanese Military Experience in the Great East Japan Earthquake

WINTER TERM

8 JANUARY 2014
[Jonathan Service](#)
The Music of Ancient Greece in Modern Japan

15 JANUARY 2014
[Christopher Goto-Jones \(Leiden\)](#)
Bushidō beyond the Samurai: death and violence in the modern world

22 JANUARY 2014
[Fabio Gygi \(SOAS\)](#)
Thing Beliefs: Hoarding and the Art of Getting Rid of Stuff in Contemporary Japan

29 JANUARY 2014
[Shinji Oyama](#)
Creative industries in Japan

5 FEBRUARY 2014
[Dr Ayako Hotta-Lister \(Independent scholar/historian\)](#)
British propaganda in Japan, her ally, during the First World War

19 FEBRUARY 2014
[Jennifer Coates \(2012-13 Tsuda Bursary recipient\)](#)
History of Postwar Japan as Told by Cinema

26 FEBRUARY 2014
[Ryan Holmberg](#)
Garo and the Birth of Alternative Manga

4 MARCH 2014
[Furukawa Hideo](#)
Japanese literature since 3/11

5 MARCH 2014
[Dr Christopher Gerteis \(SOAS\)](#)
Manufacturing Heritage in Contemporary Japan

12 MARCH 2014
[Dr Gerhard Leinss \(Cambridge\)](#)
The seasons, the moon, and the Chinese calendar in ancient Japan

19 MARCH 2014
[Professor Ina Hein \(Vienna\)](#)
Strategies of 'writing back' in contemporary representations of Okinawa – a postcolonial approach

26 MARCH 2014
[Professor Forrest Gander \(Brown University, US\)](#)
Japanese Poetry in English -a brief introduction to Japanese modern and contemporary poetry translated in English

KEY EVENTS

Conference
19 - 21 SEPTEMBER 2013
[Japan and Britain, 1613: Parallels and Exchanges](#)

- Speakers:
- Richmond Barbour (Oregon State University)
 - Richard Bowring (Cambridge University)
 - Tim Clark (The British Museum)
 - Nandini Das (Liverpool)
 - Tracey Hill (Bath Spa University)
 - Samuli Kaistianiemi (University of Helsinki)
 - Margaret Makepeace (The British Library)
 - Jin Matsushima (Tama Art University & Tokugawa Memorial Foundation)
 - Derek Massarella (Chūō University)
 - Professor Miles Ogborn (Queen Mary's, University of London)
 - Su Fang Ng (University of Oklahoma)
 - Kiri Paramore (Leiden University)
 - Morgan Pitelka (UNC, Chapel Hill)
 - Luke Roberts (UC Santa Barbara)
 - Nicole Rousmaniere (The British Museum)
 - Sofia Sanabrais (Getty Centre, Los Angeles)
 - Timon Screech (SOAS, University of London)
 - Ryuto Shimada (University of Tokyo)
 - Alain Strathern (Oxford University)
 - Melanie Trede (Heidelberg University)
 - Carla Tronu (Private Scholar)

[Meiji Jingu Autumn Lecture](#)
2 OCTOBER 2013
[Professor Sharalyn Orbaugh \(Professor and Graduate Chair, Department of Asian Studies, University of British Columbia\)](#)
Mobilizing the Home Front: Japanese and British Domestic Propaganda in World War Two

- Symposium
4-5 OCTOBER 2013
[Sex art in Japan: perspectives on shunga](#)
British Museum
- Ishigami Aki (Ritsumeikan University)
 - Paul Berry (Kansai Gaidai University)
 - Rosina Buckland (National Museum of Scotland)
 - Timothy Clark (British Museum)
 - Andrew Gerstle (SOAS)
 - Christine Guth (RCA/V&A)
 - Kano Hiroyuki (Dōshisha University)
 - Hayakawa Monta (Nichibunken)
 - Joshua Mostow (Univ. of British Columbia)
 - Timon Screech (SOAS)

Film Screening & Discussion
16 NOVEMBER 2013
Co-hosted with: Tohoku Earthquake Relief Project (TERP) London
[Tough It Out: after the Great East Japan Earthquake and Tsunami 2011](#)
Norihito Morioka (Director)

[WG Beasley Memorial Lecture](#)
4 DECEMBER 2013
[Professor William Marotti \(UCLA\)](#)
Timely and Untimely Politics: Art and Protest in Early 1960s Japan

Film Screening & Discussion
18 FEBRUARY 2014
[Angry Drummers: A Taiko Group from Osaka, Japan](#)
Professor Yoshitaka Terada (Japan's National Museum of Ethnology)

21 FEBRUARY 2014
[SOAS MA Dissertation Workshop in Japanese Studies](#)

[Annual Tsuda Lecture](#)
21 FEBRUARY 2014
[Andrew Gordon](#)
Making Sense of Japan's Lost Decades

25 APRIL 2014
Co-hosted with the British Association for Japanese Studies
[BAJS Advanced Postgraduate Conference](#)

Film Screening & Discussion
22 FEBRUARY 2014
[Drumming out a Message: Eisa and the Okinawan Diaspora in Japan](#)
Professor Yoshitaka Terada (Japan's National Museum of Ethnology)



Event Reports

The convenors reflect back on their events

CONFERENCE

Japan and Britain, 1613: Parallels and Exchanges
19-21 SEPTEMBER 2013



A Conference was held in SOAS and the British Library on 19-21 September as the key academic event of Japan400 - the celebrations of the 400th anniversary of Japan-British relations, that fell in 2014. In 1613, both countries were undergoing massive cultural, religious and political transformations at the time, and it was instructive to look at their respective systems of restructuring and recreation in parallel and comparatively.

Japan and Britain directly encountered each other for the first time that year with arrival of an English East India Company vessel, the Clove, bearing letters and gifts from King James for the Shogun. The conference therefore also addressed issues of encounter and communication.

This event took place on the exact 400th anniversary, for it

was on 19 September 1613 that the English received reciprocal presents from the Shogun (two suits of armour, which are extant), and on 21st that they departed Edo with great rejoicing.

The Conference had four interlocking panels, firstly, the internationalism of England after the close of the long Elizabethan period, secondly the social and political conditions in Japan at the opening of the Tokugawa shogunate; third was a comparison across the national divide, specifically looking at the cases of religion and art; finally, we looked a frictions, and events that led the English to withdraw from Japan after just one decade.

The Conference is sponsored by the Percival David Academic Fund and supported by the Great Britain Sasakawa Foundation.

2013年は、日本と英国が外交、貿易、文化、科学の交流を1613年に開始してから400周年を迎えるという記念の年でありました。

発見の精神と相互尊重の精神は、英国と日本という世界の両極にある二つの国を結び付け、両国間の多くの協同事業の成功と特筆すべき親交に寄与してきました。この精神は、2013年にJRCが開催してきた魅力的な行事の数々を通して改めて享受されました。

Tim Screech教授 (Japan 400 共同議長) はこの機会に際して、SOASにて『Japan 400』を記念した一連の素晴らしい行事を開催しました。

過去に開催された行事および今後予定された行事の詳細は以下のウェブサイトでご覧になれます。
<http://japan400.com/>
(英語および日本語にて記載)



2013 marked the 400th anniversary of the opening of diplomatic, trade, cultural, and scientific relations between Britain and Japan in 1613.

Through a host of exciting events during 2013, it celebrated the spirit of discovery and mutual regard that has inspired many successful collaborations and a remarkable friendship between two societies on opposite sides of the world.

Professor Timon Screech (Co-chair, Japan400) carried out an extremely successful series of 'Japan400' events at SOAS to commemorate this occasion.

Details of all past and future events can be seen on this bilingual website, <http://japan400.com/>. The site has had over 130,000 hits from all parts of the world, as well as being 'liked' on facebook, and being closely followed on twitter.

MEIJI JINGU AUTUMN LECTURE

Mobilizing the Home Front: Japan and British Domestic Propaganda in World War Two
2 OCTOBER 2013

Our speaker for the Meiji Jingu Autumn Lecture in October 2013 was Sharalyn Orbaugh, Professor and Graduate Chair of Asian Studies at the University of British Columbia. Prof. Orbaugh has a long and distinguished academic career that covers a wide range of topics related to modern Japanese literature. Her numerous publications include Japanese

Fiction of the Allied Occupation: Vision, Embodiment, Identity (Brill, 2006) and Propaganda Performed: Kamishibai in Japan's Fifteen Year War (Brill, 2014).

Her more recent academic interests have covered gender politics in cyborg anime as well as Japanese propaganda theatre in World War Two.

Her talk for this year's Meiji lecture, which attracted a large audience, was entitled 'Mobilizing the Home Front: Japanese and British Domestic Propaganda in World War Two.' Her lecture offered a fascinating comparison of the different ways in which two nations employed propaganda

as part of the war effort on their respective home fronts. Her talk spelt out the different ways in which each culture handled propaganda as an effective tool of war. On the other hand, she demonstrated that the impulse to influence home populations through selective access to the realities of war is a common phenomenon.



Sharalyn Orbaugh with Steve Dodd

We were delighted that distinguished visitors from Meiji Jingu—Director Masahiro Sato and Mr. Moriyasu Ito—were able to participate in the event that night. Following a lively question and answer session after the lecture, the Meiji Jingu visitors and members of the JRC attended a dinner in Professor Orbaugh's honour.

Connecting the JRC

Introducing our social media intern
Oct 2013 - May 2014

Christian Kohlmann (MA Japanese Studies, 2014)

I was very excited to be able to supplement my master's education at SOAS this past year with an internship at the Japan Research Centre. As the social media intern, I was able to help connect the JRC with the community by publicizing seminars and events each week. Studying in the heart of London at SOAS has been a great experience, where the university and the JRC provide an impressive array of resources and learning opportunities for students of Japan. I was also lucky enough to make my NHK debut with members of the SOAS Japan Society, singing a version of 'Hana wa Saku (Flowers Will Bloom)' to help build public support for the 3.11 disaster recovery efforts.



I graduated from the University of North Carolina at Chapel Hill in May 2013 and was encouraged to continue my studies at SOAS by a professor who had done research here as well. The focus of my degree has been Japanese religions. I am currently completing my MA dissertation, which examines the publications and characteristics of Sanbo Kyodan, a Zen Buddhist sect particularly active and influential in the United States. I am interested in working with international students at a university in my home state of North Carolina and will hopefully be able to do so in the near future.



WWW.FACEBOOK.COM/JAPAN.SOAS



WORKSHOP

Sex art in Japan: perspectives on shunga

4-5 OCTOBER 2013

Professor Andrew Gerstle, Head of Department of Japan and Korea at SOAS, University of London, along with Leverhulme Research Fellow Dr Akiko Yano, co-curated the most comprehensive exhibition to date on Japanese traditional erotic art and literature, known as shunga in Japanese. This was the result of a four-year Leverhulme funded project in collaboration with the British Museum and two Japanese universities. The exhibition catalogue, with over 30 contributors, was 536 pages in full colour.

Taking place at the British Museum, London from 3 October 2013 – 5 January 2014, 'Shunga: sex and pleasure in Japanese art' drew upon the thousands of sexually explicit paintings, prints, and illustrated books with texts that were produced, known as 'spring pictures' (shunga) in early modern Japan (1600 – 1900).

Until the last two decades shunga has been absent from academic research, virtually under a taboo, and is still under-researched. By re-focusing attention on this material, the exhibition aims to give a new perspective on Japanese society of the Edo period (1600-

1868) and the changes as a result of modernisation during the Meiji era (1868-1912).

Andrew said: "The paintings, books and prints, most by famous artists, are sexually explicit but also usually tender and often very funny. This exhibition creates a narrative over more than four centuries up to around 1900, covering themes such as humour, parody, representation of women, distribution, censorship, political subversion and its impact on European artists in the late 19th and 20th centuries, such as Beardsley, Toulouse-Lautrec, Rodin and Picasso.

A symposium was held alongside on 4-5 October 2013 at the British Museum and included local participants from SOAS, University of London and the British Museum and international speakers from Japan and the USA.

Event Reports

FILM SCREENING & DISCUSSION

Tough It Out: After the Great East Japan Earthquake and Tsunami 2011

16 NOVEMBER 2013

Tohoku Earthquake Relief Project London (TERP London) and the Japan Research Centre held a film screening and talk event in London at SOAS on 16 November 2013. The event was held in order to reflect on the events of the Great East Japan Earthquake and the Tsunami, which took place on 11 March 2011, and to explore how the lives of those affected by the disaster are being rebuilt. The day started with an opening speech by Dr. Helen MacNaughtan (Japan Research Centre), followed by a screening of the documentary film *Tough It Out: One Year After the 2011 Great Sanriku Tsunami*, directed by Norihito Morioka, a film which documented the length of one year since the immediate aftermath of the disaster. The film showed the cruel reality imposed on the lives of the Tohoku people after the disaster.



Following the film, two speakers took part in a talk facilitated by Ms Ai Shimohama (TERP London) to discuss the current situation of the disaster areas and on-going recovery efforts: Mr Shuhei Nomura, a PhD candidate in Public Health who has been working in medical care in Tohoku, and Ms Fiona Rasmussen, a member of an English charity organization, Seven Beach Aid, which have been heavily involved in community recovery support in Shichigahama in Miyagi.

The event attracted a large audience of more than 140 people.

Completed PHD

Midori Tanaka Atkins

Midori Tanaka Atkins' research interests include modernism, *Daisan no shinjin* writers (Third Wave of New Writers) and postmodern Japanese novels.



After completing her research degree with a PhD dissertation, *Time and Space Reconsidered: The Literary Landscape of Murakami Haruki*, Midori Tanaka Atkins had the opportunity to continue building a global network with academics who have conducted research on and translated the works of Murakami Haruki, the Japanese contemporary writer. In 2013, she presented papers at two conferences: at the Association of Asian Studies annual conference, she was a panel member of Murakami Bingo with a paper that examined the transformation of notions of individual and communal identity as shaped by Murakami's use of language and his depiction of time, space and memory. At the New York Conference of Asian Studies, the Murakami Bingo panel presented a new set of four papers. Tanaka Atkins' paper compared Taishō cosmopolitanism with the "post-national cosmopolitanism", or what she terms "neo-cosmopolitanism", found in Murakami's narratives. Continuing with a vein of research on the subject of social criticism of cultural politics through Murakami's position as a new type of Japanese writer within the discourse of world literature and via a survey of writings by Japanese critics on his novels, Tanaka Atkins has recently been focused on translating two pieces of literary criticism on Murakami's novels.

She will join the Japan and Korea Section in the Department of Languages and Cultures at SOAS as a member of the teaching staff for the 2014–15 year in September.

PUBLICATIONS

A book review article in *Japan Review*, on *Third-Dimensional Reading: Stories of Time and Space in Japanese Modernist Fiction, 1911-1932* by Angela Yiu (Univ. of Hawaii Press, 2013) *Japan Review*, International Research Center for Japanese Studies, Kyoto, Japan

「再考される時と空間」と題した論文で2013-14年度に博士課程を終えられるMidori Tanaka Atkins氏は、言語文化学部、日本韓国学科の2014-15年度教員として九月よりSOASスタッフの一員となります。

Event Reports

The convenors reflect back on their events

ANNUAL TSUDA LECTURE

Making Sense of Japan's Lost Decades
21 FEBRUARY 2014

We were thrilled to welcome Prof. Andrew Gordon of Harvard University to SOAS in February 2014 to present this year's Annual Tsuda Lecture. Prof. Gordon, the Lee and Juliet Folger Fund Professor of History, has a long list of outstanding publications to his name. Two of his best-known works are: *The Evolution of Labor Relations in Japan* (1985), and *Labor and Imperial Democracy in Prewar Japan* (1991). His most recent publication is *Fabricating Consumers: The Sewing Machine in Modern Japan* (2011), on the emergence of the modern consumer in Japan, using the sewing machine as window on that story.



Andrew Gordon with Steve Dodd before the lecture

His talk, entitled 'Making Sense of Japan's Lost Decades,' questioned the orthodox interpretation of recent Japanese history; namely that, following the boom years of the 1980s, the following decades have been characterized by economic and social stagnation. By pointing out the shortcomings of this argument, Prof. Gordon effectively highlighted the profound political challenges that now confront contemporary Japan. Following a very animated question and answer session, some JRC academics and this year's Tsuda Fellows took Prof. Gordon out to dinner. This proved to be another opportunity to exchange ideas and thoughts on the fascinating topic raised during the lecture. Members of the JRC seized this chance to deepen connections with Prof. Gordon, and Prof. Gordon seemed very impressed by the lively and animated responses he got in reaction to his talk.

Once again, Steve was struck by how indebted the JRC has been during these last years to the kindness and generosity of Kayako Tsuda.

FILM SCREENING

Yoshitaka Terada Documentaries
18 & 22 APRIL 2014

SOAS screened two powerful documentary films by TERADA Yoshitaka of Japan's National Museum of Ethnology. The first film, 'Angry Drummers: A Taiko Group from Osaka, Japan' dealt with music's role in helping two minorities in the Osaka area - Okinawans and the so-called Burakumin 'outcasts' - actively and publicly deal with prejudice and injustice.

The film documents the history and activities of a drumming group called Ikari 'Anger' or 'Rage' from the Naniwa section of Osaka City, which has been a drum-making centre for over 300 years. Starting in the 1960s, taiko drumming groups sprang up all over Japan - yet for many years, the taiko craftsmen were the subject of discrimination. In 1987, a group of young people started playing taiko mainly for fun, but unexpected responses from the community elders triggered them to understand the history and experiences of their community and they began to use drumming as a means to achieve human rights agendas.

The second film in the series, 'Drumming out a Message: Eisa and the Okinawan Diaspora in Japan' deals with music's role in helping two minorities in the Osaka area - Okinawans and the so-called Burakumin 'outcasts' - actively and publicly deal with prejudice and injustice.

The film explores the relationship between the experience of displacement and the construction of identity for Okinawans living in mainland Japan. Eisa is a form of dance performed in Okinawa during the summer ancestral festival, but when a tradition of performing eisa was newly established in Osaka in 1975, it was for completely different purposes. Young Okinawan workers, struggling to construct a positive identity in their geographical and cultural displacement, found in eisa a much needed outlet for self-expression that was suppressed in the presence of the mainland Japanese. The film tries to capture the voices of these young migrant workers from Okinawa and second-generation Okinawans who, through eisa, act on the derogatory images in mainstream culture, and at the same time transform themselves into individuals more resistant to the adversity created by such images.



CONFERENCE

BAJS Advanced Postgraduate Conference for Japanese Studies
25 APRIL 2014

On 25 April 2014, SOAS hosted a one-day BAJS Advanced Postgraduate Conference for Japanese Studies. The BAJS journal, *Japan Forum*, will be edited by a team of academics at SOAS from September 2014 and as part of this handover the new editorial team, Chris Gerteis, Helen Macnaughtan, Steve Dodd and Griseldis Kirsch, decided to hold a conference for PhD students.



Six panels focused on key areas of Japanese studies were organized, with presentations from 20 postgraduate students from across the UK (and further afield) presenting their research. The panels were chaired by established UK academics in Japanese studies, and the one-day event attracted an audience of some 60 participants. Timon Screech of SOAS also gave a plenary lecture titled: *Art, Religion and Money in the Early Trade of the English East India Company in Japan*.

The conference was a great success, enabling postgraduate students to gain critical feedback on their PhD fieldwork and thesis topics. It also enabled PhD students to network with established academics in the field of Japanese studies, and encouraged PhD students to share their work and gain insight into future publication opportunities. The event was generously funded by the Japan Foundation.



MA Dissertation Workshop for Japanese Studies held at SOAS on 21 February 2014

KEY DATES 2014/15

SEP	OCT	NOV
Gambarou Nippon – Imagi(n)ing Japan post 3/11 3 September 2014	Meiji Jingu Autumn Lecture 1 October 2014	
DEC	JAN	FEB
W.G Beasley Memorial Lecture 8 December 2014		Annual Tsuda Lecture 25 February 2015
MAR	APR	MAY
JUN	JUL	AUG



From left: Mr Kiyoshi Sunobe, Sumitomo Corporation, Japan, Sir Graham Fry, Sir David Warren, The Japan Society, Lady Pamela Warren and Lady Toyoko Fry

東芝国際基金の多大なる協賛と合衆国の匿名の寄贈者とBeasley教授の元生徒の協力により、二回目となるWG Beasley記念年次講演を2014年12月8日に開催する運びとなりました。



From Left: Professor Stephen Dodd (Chair, JRC, Professor William Marotti (University of California) and Sir Graham Fry



Timely and Untimely Politics: Art and Protest in Early 1960s Japan

Professor William Marotti (University of California, Los Angeles)

4 DECEMBER 2013

This year we were very pleased to inaugurate the WG Beasley Memorial Lecture, named in honour of the JRC's Founding Chair, Professor William Gerald Beasley. Professor Beasley (1919–2006) was a major figure in the development of Japanese Studies in Britain. Having started at SOAS as Lecturer in Far Eastern History in 1947, he was appointed CBE in 1980, to the Order of the Rising Sun (Third Class) in 1983, made an Honorary Member of the Japan Academy in 1984, and was awarded the Japan Foundation Prize in 2001. Read widely to this day, WG Beasley pioneered the introduction of Japanese history in British universities and was deeply committed to communicating knowledge of Japan to a broad audience. Professor Beasley's best known work, *The Rise of Modern Japan* (1990), was even recently translated into Chinese.

For the inaugural lecture Professor William Marotti of the University of California, Los Angeles, shared his research on a heavily politicized era of recent Japanese history. 'Timely and Untimely Politics: Art and Protest in Early 1960s Japan' examined the advent of 'critical art of the everyday' during the era of political exhaustion that followed in the wake of mass protests surrounding the 1960 Security Treaty Crisis. He explained that during the short but intense period between 1960 and the 1964 Tokyo Olympic Games, artists

sought to create, out of sync with broader landscapes of distrust of mass activism, a sense of eventfulness that stood apart from the emergent state-promoted, depoliticized daily life that ultimately came to characterize the high growth economy of the 1960s. A complete podcast of the lecture can be found on the JRC website. Professor Marotti's ambitious talk inspired a number of threads for discussion pursued during a lively post-lecture reception co-hosted by Mrs Hazel Beasley and Sir Graham Fry, member of the SOAS Board of Governors and former UK Ambassador to Japan. The lecture and reception was attended by a stunning number of British and Japanese dignitaries, academics, and business leaders – many SOAS alumni. The entire evening was a great tribute to the JRC's commitment to scholarly rigor and frank debate established by our first Chair, Professor Beasley.

With tremendous thanks to the Toshiba International Foundation and an anonymous American donor and former student of Professor Beasley, we are extremely pleased to announce the second annual WG Beasley Memorial Lecture to be given by Professor Janet Hunter of the London School of Economics on 8 December 2014 in the Khalili Lecture Theatre, 7:00 PM - 9:00 PM.

WG Beasley Memorial Lecture

Named in honour of the JRC's Founding Chair, Professor William Gerald Beasley

There have been some great links made this year between the Japan Research Centre and the school's Development and Alumni Relations Office. The joint collaboration has resulted in a generous donation of £5,000 from the Toshiba International Foundation. This year's grant will be used to fund the JRC's 2014 Annual WG Beasley Memorial Lecture as well as a series of 'in-conversation' events. These innovative, invite-only occasions will be held before each of the three JRC annual lectures, and will provide postgraduate students with opportunities to meet informally over lunch with their peers and guest speakers and discuss their own Japan-related interests with those of others.

Matthew Gorman, Director of Development and Alumni Relations said, "We are delighted to receive support from the Toshiba International Foundation and are honoured that the foundation recognises the great vision of the SOAS Japan Research Centre. We look forward to working to deliver these innovative plans over the next year." The JRC and DAR are working toward finding new opportunities to further the Japan Research Centre's activities and would like to work with more individuals, corporations, trusts and foundations to secure additional funds for more innovative and exciting projects. If you have any suggestions, please do call the Development and Alumni Relations office on 0207 898 4127.



John Beasley with his mother, Hazel Beasley (who sadly passed away in July 2014)



Japanese Roof Garden

A place of quiet contemplation and meditation



The Japanese-inspired roof garden at SOAS, University of London was built during the Japan 2001 celebrations and was officially opened by the sponsor, Mr Haruhisa Handa (Toshu Fukami), an Honorary Fellow of the School, on 13 November 2001. It provides an area away from the noise and bustle of London streets, where visitors can relax and meditate.



The garden is dedicated to Forgiveness, which is the meaning of the Kanji character engraved on the garden's granite water basin.

Peter Swift, a designer with experience of adapting Japanese garden design principles to the British environment and climate, conceived the garden as a place of quiet contemplation and meditation as well as a functional space complementary to the Gallery and its artistic activities.



A small stage can be used for dramatic or musical productions, for tea ceremonies or displays. Or it can be used simply as seating.

The Brunei Gallery was built in 1995 and has always had a roof garden. Unfortunately the original garden had pools that sprang a leak and the water had to be drained. As a result much of the original charm was lost and the garden fell into disuse. In 2000 Mr Handa offered to finance the creation of a Japanese-style garden and the designer Peter Swift from Planit EDC Ltd. was engaged to design and implement a suitable scheme.

The new garden was built during the summer of 2001 by Ground Control Ltd., Billericay, Essex with stone supplied by CED Ltd, Thurrock, Essex, and was opened as part of the Japan 2001 celebrations.

The newly built garden

Whether in the rain or the sun, the garden has a lot of character. Its character also changes with the time of day and the season, so it is worth a repeat visit!

Planting has been kept to a minimum, with lemon thyme used in a chequerboard pattern at the north end of the garden and the climbing wisteria to provide cool shade during the summer. The purple flowers of the wisteria also provide a splash of colour when they bloom in late spring. Various types of stone are used in the garden: a sweeping curve blends the original rectangular sandstone with the irregular green slate; the central area of raked silver grey granite chippings has regular slabs of basaltic rock alluding to a bridge over flowing water; the island stones in the gravel areas are Larvikite from Norway; dark grey pebbles from a contrast in colour and texture to the formal granite edging and to the chequerboard planting.

Opening Times

The garden is open to the public when the Brunei Gallery is open, normally Tuesday to Saturday 10.30am to 5pm except when exhibitions are being changed or during private functions. Please phone the recorded message service for current details.

Admission to the garden is free during public opening times.

www.soas.ac.uk/visitors/roofgarden/

Research Students

Students pursuing projects on Japan (Sept 2013 - Aug 2014)

www.soas.ac.uk/jrc/research/current-phd-students/

Jenny ALLAN

Japanese Cinema in the 1950s and 1960s
SUPERVISOR: DR ISOLDE STANDISH

Catherine AMES

Akutagawa and the Critique of Taisho Culturalism
SUPERVISOR: DR STEVE DODD

Ryoko AOKI

The Construction of Japanese Noh Theatre as a Masculine Art: an Analysis of its Traditional and Modern Discourse
SUPERVISOR: PROFESSOR ANDREW GERSTLE

Midori ATKINS

Time and Space Reconsidered: Literary Landscape in the Literature of Murakami Haruki
SUPERVISOR: DR STEVE DODD

Nadeschda BACHEM

Imperialism and National Identity in Postcolonial Japanese and South Korean Literature
SUPERVISOR: DR STEVE DODD

Kristian BERING

Bakin and the Theatre
SUPERVISOR: PROFESSOR ANDREW GERSTLE

Lawrence CARTER

Going Global: Studio Ghibli and the Popularisation of a Global Genre
SUPERVISOR: DR ISOLDE STANDISH

Emily CHAPMAN

Gender and Family in Postwar Japan
SUPERVISOR: DR CHRISTOPHER GERTEIS

Anlan CHEN

How should Chinese Enterprises Respond to the Issue of Rising Labour Costs Caused by Demographic Transition? A comparative analysis between Japan and China from the perspective of firm strategy
SUPERVISORS: DR DAMIAN TOBIN & DR HELEN MACNAUGHTAN

Jennifer COATES

National Crisis and the Female Image: Expressions of Trauma in Japanese Film 1945-1964
SUPERVISOR: DR ISOLDE STANDISH

Kerstin FOOKEN

Japanese Cinema in Times of Profound Socio-Economic Change: Images of Women in the Visual Culture of Japan in the 1920s and 1930s
SUPERVISOR: DR ISOLDE STANDISH

Irene GONZALES

Representations of the Prostitute in Postwar Japanese Cinema (1945-1975): Melodrama, Softporn and Politics
SUPERVISOR: DR ISOLDE STANDISH

Eiko GYOJI

Translation as a means of promoting intercultural competence among elementary and intermediate learners of Japanese
SUPERVISOR: DR NORIKO IWASAKI

Haruhisa HANDA

Calligraphy and Religious Personality in Early Modern Japan: Hakuin's Life and Writings
SUPERVISOR: PROFESSOR TIMON SCREECH

Mami HATAYAMA

The Meiji Painter and Lacquer Artist Shibata Zeshin.
SUPERVISOR: PROFESSOR TIMON SCREECH

Iris HAUkamp

Reassessing a German-Japanese film-project during World War 2: Why context(s) matter(s)
SUPERVISOR: DR ISOLDE STANDISH

Makiko HAYASHI

Constructing the Legal Profession in Meiji Japan
SUPERVISOR: DR JOHN BREEN

Noriko HORSLEY

Court Patronage and the Collecting of Art in 12th century Insei-period Japan
SUPERVISOR: PROFESSOR TIMON SCREECH

Wonwoong JEONG

The Dissolution of a Cold War Alignment: Korean-Japanese Relations, 1969-1979
SUPERVISOR: DR CHRISTOPHER GERTEIS

Yuko KAMEDA

Japan as multi-ethnic nation? Exploring the Representations of Ethnic Minorities in Contemporary Japan
SUPERVISOR: DR GRISELDIS KIRSCH

Masato KATO

Japanese New Religions and Cultural Negotiation in a Global Context: TENRIKYO'S Postwar Expansion in Europe
SUPERVISOR: DR LUCIA DOLCE

Kanji KITAMURA

Cultural Untranslatability and Business Decision-Making Differences between Japan and the US
SUPERVISOR: DR HELEN MACNAUGHTAN

Yohei KOYAMA

Life with radiation: ethnography of the nuclear disaster in Fukushima
SUPERVISOR: DR GRISELDIS KIRSCH

Herby LAI

The cosmopolitan Chinese student migrants in Japan: history, learning and self-enterprise
SUPERVISOR: DR LOLA MARTINEZ

Radu Alexandru LECA

SUPERVISOR: PROFESSOR TIMON SCREECH

Laura LÓPEZ AIRA

Representing Korea in Japanese Television Dramas
SUPERVISOR: DR GRISELDIS KIRSCH

Shinya MANO

Yōsai and the development of Zen-Esoteric Buddhism
SUPERVISOR: DR LUCIA DOLCE

Forum MITHANI

Representations of single motherhood in Japanese film and television drama
SUPERVISOR: DR GRISELDIS KIRSCH

Kanako MIYABAYASHI

Corrective feedback in the teaching of Japanese case particles
SUPERVISOR: DR BARBARA PIZZICONI

Yaara MORRIS

The Cult of Tenkawa Benzaiten – her rituals, texts, and mandalas
SUPERVISOR: DR LUCIA DOLCE

Doreen MUELLER

Documenting Disaster: Pictorial Records of the Late Edo Period (draft title)
SUPERVISOR: PROFESSOR TIMON SCREECH

Akiko NAGATA

Representation of Japanese Family in Japanese Television Drama pre- and post 3/11
SUPERVISOR: DR GRISELDIS KIRSCH

Galia PETKOVA

Performing Gender in Edo-period Kabuki
SUPERVISOR: PROFESSOR ANDREW GERSTLE

Ivan RUMANEK

The role of Noh in the genesis of kabuki - etymology of genre
SUPERVISOR: PROFESSOR ANDREW GERSTLE

Martyn SMITH

Representing Nation in Postwar Japan: Cold War, Consumption and the Mass Media, 1952-1972
SUPERVISOR: DR CHRISTOPHER GERTEIS

Ayako SUZUKI

The dynamics of Japanese identity amongst Japanese young migrants in Dublin
SUPERVISOR: DR DOLORES MARTINEZ

Nobuaki TAKASE

Mutsu Munemitsu and British Influence on Japanese Modern Nation Building in the Nineteenth Century
SUPERVISOR: DR CHRISTOPHER GERTEIS

Jeremy TAYLOR

New threats and new opportunities. Japan's (re)engagement in Africa. The case of South Sudan
SUPERVISOR PHIL CLARK & YUKA KOBAYASHI

Shino TOYOSHIMA

Making Kunsan Home: Community Building by Japanese Settlers in Colonial Korea
SUPERVISOR: DR ANGUS LOCKYER

Tomoko YAGI

Provincializing language in the translation of Bashō's haiku; a case study of 'furuike ya', 'The old pond'
SUPERVISOR: PROFESSOR ANDREW GERSTLE

Michael Edward WALSH

Security Facts: A New Framework for Analysis
SUPERVISOR: Felix BERENSKOETTER

Honorary Appointments

Visiting Scholars and Research Associates: Sept 2013 - Aug 2014

PROFESSORIAL RESEARCH ASSOCIATES

Professor Gina BARNES

Research: State formation; agricultural transition; organisation; landscape archaeology; East Asian archaeology especially Japanese archaeology and prehistory/photography
gb11@soas.ac.uk

Professor Sheldon Marc GARON

Princeton University
Research: Home Fronts: A transnational study of Japan, Germany, Britain and the United States in World War II

Professor Christopher GOTO-JONES

Leiden University
Research: Japanese philosophy and political thought; modern Japanese history; digital humanities and Japan
c.goto-jones@phil.leidenuniv.nl

Professor Neil JACKSON

University of Liverpool
Research: C19 and C20 Architecture
nj12@soas.ac.uk

Professor Peter KORNICKI

University of Cambridge
Research: Cultural history of Japan before 1900, with special interests on the history of the book in East Asia (Korea and Vietnam as well as Japan), women's education and literacy, and the history of medicine and of cartography
pk104@cam.ac.uk

Professor Ian NISH

London School of Economics
Research: International history of northeast Asian in 19th and 20th centuries

Professor Naoko SHIMAZU

Birkbeck, University of London
Research: Political, social and cultural history of modern Japan, and Japan in the wider world
ns28@soas.ac.uk

Professor Evgeny STEINER

Research: Muromachi epoch arts (especially Ikkyu and his circle); Ukiyo-e prints; history of Western collections of Japanese arts
es9@soas.ac.uk

Professor Yuriko TAKAHASHI

Classical Chinese philology and phonology
Research: (Shuowen Jiezi focusing on the process of annotation by Duan Yucai and computerization of the Xu Yuan's Text) and modern Chinese literature (Lao She focusing on his Christian background)
yt2@soas.ac.uk

RESEARCH ASSOCIATES

Dr Penelope FRANCKS

Research: Japanese economic history, especially rural economic development and the history of consumption and the consumer
p.g.francks@leeds.ac.uk

Mr Timothy CLARK

British Museum
Japanese pictorial arts of the early modern and modern periods
tc32@soas.ac.uk

Mr Joe EARLE

Research: Japanese art

Dr Christine GUTH

Royal College of Art
Research: Japanese art and design history collecting and collections; productions and consumption across cultures
christine.guth@rca.ac.uk

Dr Monika HINKEL

Research: Woodblock prints of the Meiji era, especially the print artist Toyohara Kunichika
mh105@soas.ac.uk

Dr David W HUGHES

Research: Ethnomusicology; music of East Asia especially Japan; Japanese folk and theatre music; music and linguistics; Indonesian gamelan and Javanese street music
dh6@soas.ac.uk

Dr Olga KHOMENKO

Research: Post war Japanese History of Advertisement & consumerism in Japan
ok1@soas.ac.uk

Princess Akiko of MIKASA

Oxford
Research: Japanese art; western collections of Japanese art in the west

Dr Rajyashree PANDEY

Goldsmiths, University of London
Research: Medieval Japanese literature and Buddhism
rp7@soas.ac.uk

Dr Jonathan SERVICE

Research: History of music theory; structures of perception and changes in mentalité in Japan
js100@soas.ac.uk

Dr Lone TAKEUCHI

Research: History of ideas in Early-Mid Heian Period
lt5@soas.ac.uk

Dr Sarah TEASLEY

Royal College of Art
Research: History of design and built space in modern Japan, with an emphasis on media, technology and institutional formation; design and architectural theory; gender and design; the history of new materials research and application
st50@soas.ac.uk

Dr Ellis TINIOS

University of Leeds
Research: The illustrated woodblock-printed book in the Edo period; representing China in Edo-period books and prints; the actor prints of Kunisada
P.E.Tinios@leeds.ac.uk

Dr Carla TRONU

Research: Autonomous University of Madrid
History of Japan (early modern) and Japanese religions; production of sacred space in Japanese cities; history of Christian missions in Asia; history of Nagasaki, Macao and Goa
ct8@soas.ac.uk

Dr Stephen TURNBULL

Research: Akita International University
Japanese history and religion
st52@soas.ac.uk

Dr Akiko YANO

Research: Early modern Japanese art and culture
ay8@soas.ac.uk

POST DOCTORAL ASSOCIATES

Dr Eriko TOMIZAWA-KAY

Research: Japanese Modern Art History, particularly 20th century paintings
et12@soas.ac.uk
14 MAY 2013 - 13 MAY 2015

Dr Taka OSHIKIRI

Research: Modern Japanese history; social and cultural history of Japan with reference to the practice of Chanoyu
to10@soas.ac.uk
1 JULY 2012 - 30 JUNE 2014

VISITING SCHOLARS

Professor Masayuki ITO

Aichi Gakuin University
Research: Contemporary spirituality (e.g. yoga and meditation) in Japan and the UK
mi37@soas.ac.uk
1 APRIL 2014 - 31 MARCH 2015

Dr Kentaro KOBAYASHI

Meisei University
Research: Urban and regional economics
kk68@soas.ac.uk
1 APRIL 2014 - 31 MARCH 2015

Professor Shigeki KUSUNOKI

Sophia University
Research: Competition law and policy; government contract in public works
sk133@soas.ac.uk
1 SEPTEMBER 2013 - 31 AUGUST 2014

Dr Noriko MATSUMOTO

Komazawa University
Research: Research about Nonprofit Management and Social Enterprise
nm68@soas.ac.uk
1 APRIL 2014 - 31 MARCH 2015

Professor Saori MIYASHITA

Kyushu Sangyo
Research: Sociology of work and family; gender relations in Postwar Japan
sm140@soas.ac.uk
1 SEPTEMBER 2013 - 31 AUGUST 2014

Dr Toshitaka NAGAHIRO

Wakayama University
Research: History of Japan
tn30@soas.ac.uk
1 APRIL 2014 - 26 SEPTEMBER 2014

Dr Eunjee PARK

Kagawa University
Research: The study of environmental accounting. The study of corporate social responsibility
ep29@soas.ac.uk
1 APRIL 2014 - 31 MARCH 2015

Professor Shinichi SHIRATO

Meiji University
Research: Comparative study about the role of the Chamber of Commerce and Industry (CCI) in the regional economy; comparative study about the distribution policy related to city planning and management
ss152@soas.ac.uk
1 APRIL 2014 - 31 MARCH 2015

Penelope FRANCKS Research Associate



Penny's main project this year has involved the preparation of a new edition – substantially rewritten and up-dated – of her textbook *Japanese Economic Development*, which

should be ready for publication by Taylor and Francis in 2015.

Spare moments are however still devoted to various aspects of consumption history and she was invited to take part in a workshop for a new AHRC-funded network on 'Fashion in Translation: Britain, Japan, China, Korea' at the Royal College of Art. Her paper, 'Was fashion a European invention? The kimono and economic development in Japan', has now been accepted for publication in the journal *Fashion Theory*, much to the amazement of herself and no doubt others familiar with the contents of her wardrobe!



The new Visiting Scholars Evening welcome dinner on 9 October 2013

Honorary Appointments

Highlights from our Visiting Scholars and (Professorial) Research Associates

Monika HINKEL
Research Associate



From Oct to Dec 2013 Monika taught the course 'Hidden Pleasures and Public Lives: An Introduction to Japanese Prints' for the World Arts and Artefacts Programme at Birkbeck.

On 14 October 2013 she was invited to give a talk for the Ealing Art Group entitled 'Designed for Pleasure: Japanese Woodblock Prints of the Edo period'. As part of Meri Arichi's 'Circle of Japanese Art' Monika presented a talk on 'Culture of Travel: Japanese Landscape Prints' on 16 October in the UCL Strang Print Room at the UCL Museum, combined with a viewing of Japanese prints.

Monika was a guest lecturer for the WEA course 'Great Masters of Japanese Art' at Daiwa Anglo-Japanese Foundation on 21 October 2013. Her lecture was on 'Katsushika Hokusai - Master of Japanese landscape prints'.

In March 2014 she held the course 'Source of Inspiration - Japan's Influence on European Art' at Morley College. From March to July 2014 Monika is the Japan course tutor for the Arts of East Asia year course programme at the V&A. On 17 July she will participate in the Summer School of Morley College and offer a course on 'Seasonal Imagery in Japanese Art'.

PUBLICATIONS

She contributed to the catalogue *Shunga: sex and pleasure in Japanese art* (British Museum Press, 2013).

David W. HUGHES
Research Associate



In October 2013 David presented invited lectures at University College Cork and University of Limerick, Ireland, on Japanese folk song and on oral mnemonics in the transmission of music

in various cultures (including Japan). In February 2014 he talked on "Safeguarding the heart's home town: Japanese folk song as Intangible Cultural Heritage" at the symposium "Safeguarding the Intangible: Cross-Cultural Perspectives on Music and Heritage" at Goldsmiths College, London. He also lectured on Japanese music for the SOAS Executive Training Programme for Japan in November 2013.

David continues his involvement in public events related to Japanese music, for which the Japan Society gave him its annual



award in 2011. Among others, he arranged and hosted three events at SOAS: a taiko concert by Taiko Meantime with Kodo's Kojima Chieko; a Buddhist chant workshop by Ueda Junko; and two film showings on the theme of "Music and Minorities in Japan".

Two performance groups for Japanese folk song and dance founded by David, the London Okinawa Sanshinkai and the SOAS Min'yo Group, practice frequently at SOAS. One or both groups performed at events including the annual Japan Matsuri in Trafalgar Square (October 2013), the Brighton Japan Festival (September 2013), Sheffield Japan Day (March 2014), and Okinawa Day, London (June 2014). For a taste, see www.youtube.com/watch?v=o1-fRVFaJIA.

Olga KHOMENKO
Research Associate



From Oct to Dec 2013-2014 academic year was very good and productive year for Olga. During 23-28 of October, 2013 she visited USA and presented a paper about "Constructing

of "new woman" in women's magazines and process of shaping up consumer society in post-war Japan" at "Gender, Race and Representation in Magazines and New Media" during conference at Cornell University, Ithaca, USA. Olga was part of the panel about "Building Narrative of Class mobility in Women's magazines in Japan and India". She thinks she was very lucky in many ways to attend and present at this conference: to was able to visit Cornell University (one of the best private university in US), its library and meet professors and students.

In the end of January 2014 Olga published her first book of essays in Japanese language in Tokyo. This book about Ukrainian history and culture has been published by old and prominent Gunzoshya publishing house in amount of 2000 books and has already been warmly welcomed in Japan. Japanese newspaper *Asahi* wrote a very positive review on it. Also its been introduced in *Shukan Bunshun* weekly magazine and on radio Yokohama show. Olga hopes her book will help Japanese people to understand Ukraine and Ukrainians and will bring Japanese and Ukrainian people closer to each other. She been working on it for last few years and she is pleased that her work has been recognized in Japan.

Also this academic year Olga continues to work on rewriting her PhD dissertation thesis about shaping up new consumer culture in post-war Japan written in Japanese into monograph in English, and is teaching several courses on Modern History of Japan and Asia at Kiev Mohyla Academy National University, Ukraine.

Peter KORNICKI
Research Associate



Peter has been around and about quite a bit this year: in December he gave a lecture and seminar in the Yale History of the Book program at Yale and then in March Peter gave the inaugural

Leiden Lecture in Japanese Studies, a series that will continue with lectures by invited speakers every two months over five years. Later in March Peter lectured at Harvard and Brown, and in July he gave the Carmen Blacker lectures in Norwich and London.

PUBLICATIONS

Kornicki, Peter. 'Hayashi Razan's vernacular translations and commentaries', in Lawrence Wong, ed., *Towards a History of Translating: In Commemoration of the 40th Anniversary of the Research Centre for Translation*, The Chinese University of Hong Kong (Hong Kong: CUHK, 2013), pp. 189-212.

Kornicki, Peter. 'Recent work on the history of the book in Japan', in *Jaarboek voor Nederlandse boekgeschiedenis* 20 (2013), pp. 125-139.

Kornicki, Peter, and Cynthia Brokaw, eds. *The history of the book in East Asia*, edited with Cynthia Brokaw (Farnham: Ashgate, 2013).

Ian NISH
Research Associate



The book Ian edited on *The British Commonwealth and the Allied Occupation of Japan, 1945-52* was launched at a conference in January at which the keynote speaker was Dr

Gordon Daniels (University of Sheffield).

Ian spoke at Conferences on 'Japan after the Bubble'; 'Japan in the First World War'; and 'Australia in the Great War: Centenary Perspectives'.

Jonathan SERVICE
Research Associate



Jonathan presented a paper titled "Wakon yosai and the Problem of Music in Meiji Japan" at the British Association for Japanese Studies Joint Asian Studies Conference at the

University of Nottingham in September. In January, he presented a paper titled "The Music of Ancient Greece in Modern Japan: The 1882 Tokyo Performance of Mesomedes's Hymn to Apollo" as part of the SOAS Japan Research Centre Seminar Series. He presented a paper titled "Katyusha's Song and the Missing Fourth and Seventh Scale" at Cambridge University as part of the East Asian Seminar Series in April.

Jonathan also participated as a discussant at the "Theory and Post-Theory in the Study of Japan" panel at the White Rose East Asia Centre Colloquium, at the "Work and Leisure" panel at the Japan Foundation Postgraduate Workshop, and at the "Imperialism and Empire" panel at the BAJIS Advanced Postgraduate Workshop in Japanese Studies.

Jonathan is currently working on his first book project, *Orchestrating Modernity*, and on a translation project based on the ground-breaking musicological works of Tanaka Shohei. Jonathan is the editor of the SOAS Occasional Translations in Japanese Studies and looks forward to pursuing a project on the history of the senses with student translators in the UK. He has translated the notes and commentary written by Choki Seiji for Ena Kajino's CD "Robert Schumann: Violin Sonatas." In June, Jonathan was elected the Okinaga Junior Research Fellow in Japanese Studies at Wadham College, Oxford.

Honorary Appointments

Visiting Scholars and Resesearch Associates

Naoko SHIMAZU
Professorial Research Associate



In 2013, Naoko successfully concluded the three-year Leverhulme International Network Grant (for which she was the co-principal), 'Japan and East Asia National

Identities and Education Network' (JEANIEN), with Prof Paul Morris (Institute of Education, principal investigator) and Dr Edward Vickers (Kyushu University). The edited volume which encapsulates the project was published in December 2013 – *Imagining Japan in Postwar East Asia* (Routledge). With the advent of the centenary of the First World War, Naoko has given two plenary lectures: 'Geopolitics and Military Cosmopolitanism in a Global Age: Reconsidering Japan as a New Military Power, 1890s-1920s' at the University of Oxford, and 'A Historiographical Turn: New Perspectives on the Role of Japan in the First World War' at the National University of Malaysia, Kuala Lumpur. Otherwise, her previous work on the Russo-Japanese War still keeps her busy with a plenary on 'Revolutionary Dreams?: Impact of the 1905 Russian Revolution on the Japanese Soldiers' at the Seoul National University, and a publication on 'The Mentality of the Japanese Conscript and Manchuria as "Lieu de Mémoire"', *Francia: Research on Western European History*, 40 (2013), pp. 429-443. She has been most excited with her active involvement in the creation of a new Russo-Japanese War section in the Museum of the Great War 1914-1918 in Peronne, France, working with the cultural historians of WWI and curators there. Above all, she continues to work, time permitting, on her current major project on the cultural history of the Bandung Conference, with a plenary lecture at Birkbeck on 'Performative Space in Diplomacy', and her publication on 'Diplomacy as Theatre: Staging the Bandung Conference of 1955', *Modern Asian Studies* 48:1 (January 2014): 225-252.

Evgeny STEINER
Research Associate



In the last academic year Evgeny presented partial results of his ongoing project on the "Displaced Art" in two international conferences:

1) "Japanese Art from Berlin Collections Kept in Russia: Locations, Documentation, and Problems of Access", a paper at the Preservation and Transmission of the Japanese Cultural Legacy in Europe, the 24th Conference of European Association of Japanese resource Specialists (EAJRS), 18-21 September, 2013, INALCO, Paris.
2) "Collections Displaced as a Result of the WWII: The History and the Current State of the Problem," a paper at the 1st EAJS (European Association of Japanese Studies) Japan Conference, 28-29 September, 2013, Kyoto University.

In April he delivered a keynote lecture at the conference which he helped to organise: West—East, Inseparable Twain: Remixed and Revisited, International Conference Traditions & Transformations in the East: New Modalities in Asian Studies, 21-22 April, 2014, Nat. Research Univ. Higher School of Economics.

He also delivered a keynote address at the Conference 'Philosophy. Language. Culture', 28-29 April, 2014, Nat. Research Univ. 'Higher School of Economics': "Orientalism as the Ur-Phenomenon of Modernity and Globalization."

PUBLICATIONS

In February Evgeny's opus magnum about Muromachi culture with Ikkyu Sojun as its focal point was finally published: *Zen-Life: Ikkyu and Beyond*. Cambridge: Cambridge Scholars Publishing, 2014. 475 pp.

The book launch took place at the Daiwa Anglo-Japan Foundation in London on 13 May. The event was chaired by Prof. Timon Screech. The information and the full audio recording can be found at the Daiwa website: www.dajf.org.uk/event/zen-life-ikkyu-and-beyond

Lone TAKEUCHI
Research Associate



Lone attended the conference, Japanese Civilization: tokens and manifestations, in Cracow in November 2013 and presented a paper on 'Minamoto no Shitagō's Ametsuchi text as a letter-wheel'.

Evgnry also published the following articles:

"Zen Portraits Chinzō: Why do They Look as They do?" // *Orientalia et Classica, Orientalia et Classica*, papers of the Inst of Oriental and Classical Studies (Rus. State Univ. for the Humanities). Vol. LI. Moscow: RGGU, 2013, pp. 187-199. [Engl.]

"Hokusai Manga: The Contextualization of its Title and Genre" // *Observatory of Culture*, 2014, #2, pp. 68-77. [Rus.]

"Endlessly Variegated Pictures: A Pictorial Encyclopedia Of Old Japanese Life (An Introduction To Hokusai Manga's Full Edition With Commentaries)" // Working papers by HSE Publishing House. Series WP "Working Papers of Humanities". 2014, 37 pp. [Engl.]



Carla TRONU
Research Associate



During terms 1 and 2 of the academic year 2013-2014 Carla taught the lectures on religion of the courses 'Aspects of Japanese Culture 1 & 2', within the BA Japanese Studies

at the Department of Languages and Cultures of Japan and Korea, SOAS and presented research papers at the following international conferences:

20-21 September 2013, "Competing Diplomacies in 1613: King James' Embassy to Japan and the Date Masamune Embassy to Spain (1613-1620)" Japan and Britain, 1613: Parallels and Exchanges, SOAS-The British Library, London, UK.

11-13 November 2013, "Sacred space and the urban formation of Nagasaki in the late 16th and early 17th centuries" Patters of Early Asan Urbanism, International Institute of Asian Studies (IIAS), Leiden, The Neatherlands.

13-14 December 2013, "Sacred space and Ritual in early modern Japan" Symposium of Early Modern Japan in Europe, Centre Européen d'Études Japonaises d'Alsace (CEEJA), Kientzheim, France.

Since February 2014 she has been based in Japan, enjoying a one-year Postdoctoral Short Term Award from the Japanese Society for the Promotion of Science and is currently a Visiting Research Fellow at Tenri University, where she is carrying out research on the so-called "Kirishitan-ban", i.e. the publications by the Jesuit Press in Japan, of which several original copies are kept at the Tenri Library.

PUBLICATIONS

TRONU, Carla (2013) "Las relaciones de los mercaderes como fuentes históricas: Nagasaki visto por un viajero castellano en el siglo XVII" en Pilar Garcés y Lourdes Terrón (eds.) *Itinerarios, viajes y contactos Japón-Europa*, Berna: Ed. Peter Lang. pp.929-943. ISBN: 978-3-0343-1195-3-gb.



Tronu, Carla, "Book Review of Steven Heine's Sacred High City, Sacred Low City: A Tale of Religious Sites in Two Tokyo Neighbourhoods, Oxford University Press, 2012" in *Japan Review* 27, 2014.

Stephen TURNBULL
Research Associate



In October Stephen Turnbull took part as a guest lecturer in the 'Year of Japan' at Kennesaw State University in Atlanta, Georgia where he presented his latest research on Japanese

mercenaries in Southeast Asia during the seventeenth century. In February he gave a lecture about Japanese castles at the launch of a major exhibition of Japanese arms and armour at the Kimbell Art Museum, Fort Worth Texas, followed by a lecture at the University of Southern California about his research into Japanese phallicism. In March he taught a new course at Akita International University entitled 'Tōhoku: A Land Apart?'. He then spent a further month in Japan carrying out the final fieldwork for the phallicism book, thereby completing a series of visits to 500 separate sites. This included observing the annual matsuri in the village of Aganogawa (Niigata prefecture) where the old protective straw figure called Shoki-sama is replaced with a new one.

The highlight of his year was however the much-delayed release of the film 47 Ronin (Universal Pictures, 2013) starring Keanu Reeves. He and Christopher Gerteis acted as historical advisers for the project which, somewhat puzzlingly, had always been planned as a fantasy film. Stephen Turnbull's main area of involvement was with the set design where, unlike most of the film, great stress was laid on historical accuracy, and had the satisfaction of being involved in the building of a full-scale and very realistic Japanese castle at Shepperton Studios. It was a replica of Kumamoto Castle and was built to scale up to the second storey, after which computer-generated imagery took over. He also advised on the fight scenes and the weaponry and made several valiant attempts to persuade the director to remove embarrassing anachronisms from the script.

Kayoko Tsuda Bursary (Japanese Studies)

PhD degrees at SOAS involving any aspect of Japanese Studies

Iris HAUKAMP

Kayoko Tsuda Recipient 2014-2015
INTRODUCTORY REPORT



Thesis Title

A Foreigner's Dream of Japan:
The struggle over power and
authenticity in a German-
Japanese coproduction

Abstract: The binational film project *The Samurai's Daughter* (*Die Tochter des Samurai*, 1937, Fanck) and *New Earth* (*Atarashiki tsuchi*, 1937, Itami) has been dismissed in scholarly discourse as a piece of political propaganda, with a focus on Fanck's German-Japanese edition. The films themselves as well as Japanese interests in the costly undertaking have remained curiously underexplored. With my thesis I argue against predominantly political readings relying on seemingly straightforward causal relations and their lasting impact on interpretations of the participants. The project was far more complex than a politically determined exercise in Orientalist representation. In interplay with political currents, it became the locus of a power struggle over representational authority.

An in-depth historiographical analysis of contextual events relativises previous accounts and locates the project within a continuous cultural-industrially motivated process of negotiating a national image of Japan on international cinema screens. Reinserting the films into the directors' careers reveals the prominent status of 'authenticity' as a real power factor in their interactions as well as a critical key to understanding the project's discursive level. An overdue comparative textual analysis suggests the necessity to reconsider the films as creative products of a representational and aesthetic power struggle, and hence as cultural, rather than purely political artefacts. While authenticity emerges as a crucial trope in (trans-)nationalist discourse, *The Samurai's Daughter*/*New Earth*, with the 'cultural insider' Itami failing to deliver the required result, evidences it as inherently political and far from unified. The interdisciplinary study of these two competing versions of one film from demonstrates the epistemological potential and validity of differentiated, discursive approaches to cultural artefacts.

Kishi Keiko Kinema Junpo



Jennifer COATES

Kayoko Tsuda Recipient 2013-2014
FINAL REPORT



Thesis Title

National Crisis and the Female
Image: Expressions of Trauma
in Japanese Film 1945-1964

The Kayoko Tsuda bursary supported the final six months of writing Jennifer's PhD, allowing her to focus on clearly presenting her research findings. This was a particularly crucial stage of the PhD process as she had collected a large quantity of materials during her research, having travelled to Japan, Australia and the United States to use the resources of high-profile institutions including the Library of Congress, the Gordon Prange Collection at the University of Maryland, and the Waseda Tsubouchi Theatre Museum. Jennifer's ambitious blend of trauma and affect theory combined with a large corpus of film and archival materials required careful presentation; She analyzed selected film texts from a corpus of almost 600 films using an art-historically informed iconographic method, contextualized by critical and fan commentary published in the popular print media of the period 1945-1964. As you can imagine, presenting this complex project on paper took time and careful editing! Without the assistance of the Tsuda bursary this would not have been possible.

The generosity of her Tsuda bursary also allowed Jennifer to visit many universities around the UK and present her research at workshops and conferences for young scholars. In January 2014 she co-organized a workshop at the University of Leeds, presenting her research and participating in round table discussions on theory in Japanese studies. Such experiences encouraged her to situate her research productively in the wider field of Japanese studies, and allowed her to meet many researchers who gave invaluable advice and created further opportunities for her. Jennifer has recently completed her PhD viva and taken up a research position at the Hakubi Centre for Advanced Research in the University of Kyoto, greatly assisted by the experiences and opportunities afforded by the Tsuda bursary artefacts.

Japan Forum

Official journal of the British
Association for Japanese Studies

Japan Forum's primary objective is to publish original research in the field of Japanese Studies, making available scholarship on Japan to an international readership of specialists and non-specialists. From 1996 Japan Forum has been published by Taylor and Francis, a major publisher in the area of Japanese Studies.

Japan Forum is multidisciplinary, publishing contributions from across the arts and humanities and social sciences. Articles range from archaeology, language, literature, philosophy and culture to history, economics, politics, international relations and law. Submissions from younger researchers as well as from established scholars are welcome, as are submissions that cross disciplinary boundaries or do not otherwise match the subject areas listed above. All submissions are independently refereed.

Japan Forum Editorial Team

2014年九月より2017年9月までの3年間、定評ある専門誌「ジャパンフォーラム」(英国組織における日本研究の公式専門誌)の編集を四名のSOAS教授(Steve Dodd氏、Christopher Gerteis氏、Helen Macnaughtan氏、Griseldis Kirsch氏)が担当することとなりました。



From left: Kristen Purcell, Griseldis, Helen, Christopher, Emily and Steve

Four SOAS faculty members (Steve Dodd, Christopher Gerteis, Helen Macnaughtan and Griseldis Kirsch) will take on editorship of the highly prestigious journal *Japan Forum* (official journal for the British Association for Japanese Studies) for a three year period between September 2014 and September 2017. Emily Chapman joins the team as Managing Editor.

Contact the team:

- Japan Forum: japanforum@soas.ac.uk
- Book reviews: jfbookreviews@soas.ac.uk

KAYOKO TSUDA BURSARY

The bursary was created through the generosity of Ms Kayoko Tsuda.

Applicants may be of any nationality and in need of the bursary to fund completion of their thesis. The bursary is awarded to students writing up their PhD dissertations at SOAS in either their third or fourth year during the academic session 2015/16. Those working on any aspect of Japanese studies are eligible.

One bursary is offered per year, carrying a value of £7,000 (untaxed).

Further information

www.soas.ac.uk/registry/scholarships

Email: scholarships@soas.ac.uk



From the Library

One of the world's most important academic libraries for the study of Asia



SOAS Library is one of the world's most important academic libraries for the study of Africa, Asia and the Middle East, which attracts scholars from all over the world to conduct research. The Library houses over 1.2 million volumes at the SOAS campus at Russell Square in central London, together with significant archival holdings, special collections and a growing network of electronic resources.



Librarian's Report

The Library holds some 160,000 monographs for Japanese studies. In addition, there are over 1,000 Japanese language periodicals, some 300 western language periodicals, and over 500 audio-visual materials for teaching and research in Japanese studies; the online catalogue is available at <http://lib.soas.ac.uk/>.

The Library subscribes to major research databases; the list is available at <http://www.soas.ac.uk/library/resources/a-z/>. SOAS academics and students have access to newspaper databases (Asahi, Nikkei, and Yomiuri), JapanKnowledge, Zassaku Plus, and full-functions of CiNii. External members are welcome to use them in the Library.

The Library includes an extensive collection of pre-modern texts and prints including some 300 woodblock print books and over 500 prints are held in the collections, and some Japanese manuscripts are held in the Archive section; details are found in Japanese Books in the SOAS Library (Chibbett. 1975) and Catalogue of Japanese Manuscripts in the Library of the School of Oriental and African Studies (Yasumura. 1979).

In 2013/14, the Library became affiliated with Toyo Bunko Library in Japan. Each library will exchange its publications, and supports researchers from both institutions.

Donations in 2013/14

- As in previous years, the Library has received financial support from the Sainsbury Institute for the Study of Japanese Arts and Cultures to acquire materials on Japanese art and culture. 50 titles were acquired, including Bijutsu Hyōronka Chosaku Senshū (20 vols.) and Nihon Bijutsu Sakuhin Refarensu Jiten. Kojin Bijutsu Zenshū [Hhanga hen and Kogei hen].
- The Library received £2,000 from an anonymous alumnus for Japanese language publications on Japanese visual culture. We are deeply grateful for this very generous donation. Thank you!
- The Library received 200,000 Yen from Kasumi Kaikan (Tokyo) for materials on Japanese culture.

Fujiko Kobayashi (Subject Librarian (Japan and Korea), fk2@soas.ac.uk)

www.soas.ac.uk/library/subjects/japkor



Meiji Jingu Japanese Studies Research Scholarships

MPhil/PhD programme involving research on Japanese Studies



Mr Sato, accompanied by Mr Ito, from Meiji Jingu met with Paul Webley in October 2013 in order to sign a three-year renewal of the agreement by which MJ provides funds for an annual lecture, two yearly scholarships and research funding for SOAS faculty. We are deeply grateful to MJ and hope our relationship will continue long into the future.

MEIJI JINGU JAPANESE STUDIES RESEARCH GRANTS FOR SOAS STAFF

Grants are offered to assist full-time academic staff members of the JRC, SOAS, to promote Japanese Studies.

Funds may be used for personal research, conferences, etc, or to purchase research-level books for the SOAS Library. Group projects are acceptable, but should be submitted in the name of one representative individual.

Further information: www.soas.ac.uk/jrc/awards-and-grants

2014/2015 Recipients

Name	Project Title	Amount Awarded
Dr Stephen Dodd	The Translation of Same-Sex Desire in Natsume Sōseki's Kokoro	£566
Dr Lucia Dolce	Spirit Possession: Exploring Power, Personhood, Body and Agency across Asian Societies	£500
Dr Helen Macnaughtan	The "Witches of the Orient" and Japanese sporting history	£566
Dr Kirstin Surak	Making Tea, Making Japan: Cultural Nationalism in Practice - Author Meets Critics Session	£566

www.soas.ac.uk/jrc/awards-and-grants/recipients-of-the-meiji-jingu-research-small-grants-for-soas-staff.html

Meiji Jingu Japanese Studies Research Scholarships

MPhil/PhD programme involving research on Japanese Studies

Anlan CHEN
Meiji Jingu Recipient 2013-2014
FINAL REPORT



Thesis Title
How should Chinese Enterprises Respond to the Issue of Rising Labour Costs Caused by Demographic Transition? A comparative analysis between Japan and China from the perspective of firm strategy.

It has been such a great honour for Anlan to receive the 2013-2014 Meiji Jingu Japanese Studies Research Scholarship. Anlan is an overseas student who is financing her PhD study by herself, so the Meiji Jingu scholarship provided her with important financial support and largely helped her to concentrate on her research. Anlan's PhD thesis is a comparative study between Japan in the 1970s and China today with the focus on the manufacturing industry. It aims at analysing Japanese companies' strategic solutions to increased labour costs during the 1970s and 1980s, and considering meaningful experience for Chinese firms to learn from Japanese firms. In the past academic year, she wrote a key chapter on Japanese management in the 1970s and 1980s, adapting the content of this chapter into a conference paper, and presented (for the first time in her academic career) at the BAJIS Advanced Postgraduate Conference which was jointly organized by the JRC and the British Association of Japanese Studies in April 2014.

Winning the Meiji Jingu scholarship also brought her valuable opportunities to communicate with and learn from scholars in similar academic fields. The SOAS scholars in the JRC kindly offered her constructive suggestions on her research; and thanks to their help, Anlan built initial contact with scholars in research institutions in Tokyo, Kobe and Hokkaido. Learning from their expertise in Japan studies helped to broaden her range of reading and writing. In the coming academic year, while continuing with her PhD research, she will be working on an academic paper on Japanese management strategies, which will be developed from her presentation at the BAJIS conference. And in the same time, she will try to arrange a short-term academic visit to Japan in order to communicate with more Japanese scholars in person.

What the Meiji Jingu scholarship has brought to Anlan has been far beyond what she could expect, and she deems that the support she's received from it will have a long-term impact on her career.

Myung Ja KIM
Meiji Jingu Recipient 2013-2014
FINAL REPORT



Thesis Title
Diaspora and the Divided Homeland

As recent Russia's aggressive action toward Ukraine shows, diaspora is likely to become causality for geopolitical challenge.

The aim of Myung's research is to examine the correlation between geopolitics and diaspora. This paper will focus on the cohesion of the US-Japan-ROK triangle alliance, which has been a causal factor of frequent shifts in the ruling elites' policy toward the Zainichi diaspora during the Cold War era. By explaining the causal linkage between the alliance cohesion and Japan's policy shift toward the Zainichi diaspora, the paper provides the empirical explanations of the policy shifts on the Zainichi diaspora group implemented by Japan as a response to exogenous political-economic shocks under asymmetric relations within the US-Japan-ROK alliance. By doing so, it explores how the identity of the Zainichi diaspora has become deeply entangled in both the geopolitical power relationships of countries such as the US, China, Russia, Japan and the divided Korea. In addition, it will provide a prospective policy suggestion under the intense environment of East Asian international relations.

Thanks to the Meiji Jingu Scholarship, Myung can sufficiently concentrate on her studies throughout the year. Without this scholarship, she could not have pursued her studies. Furthermore, due to Meiji Jingu scholarship, her research proposal was accepted to make a presentation at the "Race, Ethnicity and Post-Colonial Studies PhD Symposium 2014". This symposium will be held at the The London School of Economics and Political Science (LSE) on Thursday, 12 and Friday, 13 June. This year's symposium is sponsored jointly by the LSE Social Policy and LSE Sociology Departments and has received additional financial support from the Runnymede Trust's AHRC Academic Forum grant and Mike Savage's ESRC Professorial Fellowship.

Myung would like to ask Meiji Jingu institution to accept her great appreciation for every academic achievement.



"*Kamizono*" is a research journal issued by the Meiji Jingu Research Institute.

The journal will feature a short essay in Japanese by the 2013-2014 recipients of the Meiji Jingu Scholarships, Anlan CHEN and Myung Ja KIM in autumn 2014 / spring 2015.

Further details available online:
www.meijijingu.or.jp/english/about/9.html

Elia DAL CORSO
Meiji Jingu Recipient 2014-2015
INTRODUCTORY REPORT



Thesis Title
Study On Evidential Strategies In The Sakhalin Dialect Of Ainu And Nivkh

Outline of the Project

Detailed account of the evidential strategies that can be found in the Sakhalin dialect of the Ainu language as well as in the Sakhalin dialect of Nivkh and in its variety of the Amur region too.

Introduction

Ainu and Nivkh are two endangered languages isolate spoken through the northernmost island of Hokkaidō in Japan and the Russian island of Sakhalin as well as in a small region around the Amur river in the continental Russia. Although they don't have any genetic relationship, they share the same environment and they have been historically linked by cultural and sometimes trading relations. All these aspects are very important for the study of evidentiality that studies how a language expresses the ways a certain people uses to describe its relationship with reality. It would be very interesting to deepen the knowledge on this topic to highlight how the same environment or other shared factors, be they expressively cultural or just circumstantial, can influence two languages, even though they are genetically unrelated.

Elia will focus firstly on the simple grammatical structure of the evidential strategies. This part of the research will deal with what means evidentiality is structurally expressed by, giving a detailed description of the grammatical classes of the words involved and what kind of structural constraints evidential strategies require in the sentence.

Then Elia will focus on the semantics of the strategies. In this second part of the thesis he will operate a cross-linguistic comparison that will highlight in which contexts evidential strategies are used, what kind of meaning they have, that is which type of relation with the external world and which type of perceptions of or commitment to a situation they want to express, and how the linguistic register can affect their usage.

Michiko SUZUKI
Meiji Jingu Recipient 2014-2015
INTRODUCTORY REPORT



Thesis Title
A History of Japanese Red Cross Society Humanitarian Relief Activities in Wartime Japan, 1934-1946

Outline of the Project

Michiko's research explores wartime humanitarian relief activities of the Japanese Red Cross Society (JRCS), focusing on their initial atomic bombing relief activities in Hiroshima and Nagasaki, and their visit to Allied POW camps.

Introduction

The project examines the historic Japanese wartime relief activities carried out by the Japanese Red Cross Society (JRCS) during the Second Sino-Japanese War (1937-1945) and the Pacific War (1941-1945). It particularly focuses on their initial A-bomb relief activities in Hiroshima and Nagasaki on the day of atomic bombings, and their visit to Allied POW camps, which have hitherto remained un-researched. The project also explores the 15th Red Cross International Conference in Tokyo in 1934, which became the first Red Cross international conference in Asia, and investigates a number of Red Cross wartime natural disaster relief activities conducted after the events of several significant earthquakes believed to be above magnitude 8, some of which were followed by devastating tsunamis in western Japan (1943-1946).

The archives of the JRCS tell us of its significant experiences, particularly during the various wars of the Japanese Empire. The most remarkable aspect of this organisation is the fact that it carried out a wide range of different humanitarian relief activities simultaneously during the Second World War.

Whether the JRCS was still able to fulfil its organisational mission or not within the confined wartime context has been questioned in general. However, this project, while considering these criticisms, aims to highlight the strong humanitarianism of the real atomic bombing relief activities and thereby illustrate how aid workers are able to keep neutrality and impartiality during wartime. In fulfilling this aim, the project hopes that such valuable ethos can continue to be respected and pursued even in the nuclear age today.

MEIJI JINGU SCHOLARSHIPS 2015-2016

Two awards are offered to either PhD students at SOAS, or newly enrolling full-time MPhil students, who have been accepted by SOAS.

Students may be registered in any department, and be of any nationality, but must be working on some aspect of Japanese Studies. PhD candidates must be resident in SOAS: the award cannot be used elsewhere.

Studentships are worth £7,000.

Further information:

www.soas.ac.uk/registry/scholarships

Sasakawa Postgraduate Studentship

Sponsored by the Nippon Foundation and the Great Britain Sasakawa Foundation



SASAKAWA POSTGRADUATE STUDENTSHIP 2014

The Japan Research Centre (JRC) was pleased to invite applications for the Sasakawa Postgraduate Studentship, made possible through the generosity of The Nippon Foundation and the Great Britain Sasakawa Foundation.

Any full-time Postgraduate Taught Masters Degree Programmes with a dissertation on a theme connected with Japan and any full-time MPhil/PhD student (new admissions and current SOAS MPhil/PhD students) whose thesis topic focuses on any aspect of Japan were eligible.

The studentship was worth £10,000

Further information:
www.soas.ac.uk/registry/scholarships/sasakawa-postgraduate-studentship.html

Radu LECA

Sasakawa PG Studentship Recipient 2013-2014
INTRODUCTORY REPORT



Thesis Title

The Backward Glance: Concepts of 'outside' and 'other' in the Japanese spatial imaginary of the 17th century. The analysis of visual representations of peripheral spaces and identities, and what these representations can

tell us about the relationship between reality and fantasy in this period.

Born in Romania, Radu became interested in book illustrations and the imaginary spaces depicted therein while researching Japanese literature in Kanazawa University. Radu pursued this interest under the supervision of Timon Screech with an MA and now a PhD in History of Art at SOAS. The questions framing the doctoral project have been: What was the relationship between late 17th century urban visual culture and spatial imagination in Japan? How were the concepts of center and periphery, reality and fantasy, configured by processes of legitimization? How was spatial fantasy integrated into the construction of alternative identities?

Radu's research found that ideas of space outside Japan became framing devices for an emerging national identity: they were used reflectively to comment on eccentricities within Japan. References to the geographical imaginary were vernacularized: playfully re-deployed for the construction of eccentric identities in an urban context which emphasized the commercial and the erotic. The fantastic outside and Other was thus internalized, signalling a change in the experience of 'other spaces' within late 17th century urban culture: from narratives of going there and encountering the Other, to temporary transformations of everyday space into an otherworld within which the participants embody the Other.

Now in his final year, Radu gratefully receives The Sasakawa Studentship as a substantial source of support during the delicate phase of bringing all the elements together and synthesizing the conclusions of this multi-faceted study.

SOAS School wide events

Networking with the wider community

SOAS ALUMNI ASSOCIATION IN JAPAN (SAIJ)

Overview

The SOAS Alumni Relations team has over 580 contactable SOAS Alumni based in Japan, with approximately 130 of who live in Tokyo. The SAIJ Network is run by a team of dedicated alumni volunteers who organise events in and around Tokyo throughout the year. The group is always happy to host talks and presentations featuring alumni speakers as well as visiting SOAS staff and academics. Members of the SAIJ Network Committee also work with SOAS staff to support recruitment activity in the region.

Events and Activities

The SAIJ Network hosts a year-end party every December. The event is extremely well attended by members of the active SOAS community in Japan which can include, staff, students and even prospective students, as well as alumni. In addition to this annual event, the SAIJ Network works closely with other UK University alumni groups based in Tokyo. Highlights from the past year include the monthly drinks, the Cherry Blossom viewing party in April and the London universities summer party.



Get in touch

For more information on alumni activity in Japan please contact the SOAS Alumni Relations team at alumni@soas.ac.uk or on +44 (0)20 7898 4041. You can also view photos on the alumni Flickr page (www.flickr.com/photos/soasalumni) and read updates from the group on their Facebook page: www.facebook.com/SOAS.alumni.japan

European Executives visit for Executive Training Programme for Japan and Korea

During November 40 executives from all over the European Union came to SOAS for a further cycle of the 3-week Executive Training Programme (ETP) for Japan and Korea. This one-year executive development programme is funded by the European Commission and has been running for more than 30 years. There are now over 1,000 ETP alumni, many now working in senior posts in the Japanese and Korean offices of European companies.



SOAS is part of a consortium with Waseda University in Tokyo and Yonsei University in Seoul who jointly deliver the one-year programme. The three-week module at SOAS provides participants with historical, political, economic and cultural background as well as an introduction to the East Asian business environment and practical skills training for developing effective business plans and learning the Japanese and Korean writing systems. Following the European module participants move to Japan or Korea for nine months where they undergo intensive training in Japanese or Korean language, business and management and take up a three-month internship in a relevant sector.

Professor Richard Black, Pro Director for Research and Enterprise at SOAS, University of London said "We are delighted to have hosted the Executive Training Programme again this year, and to be working with our partners Waseda and Yonsei universities. ETP is an exciting initiative, and a great way for SOAS to share its knowledge and expertise on Japan and Korea with the wider business community."

The SOAS Enterprise Office is running the programme with support from academic staff from the Japan Research Centre and Centre of Korean Studies. Around 30 academics are involved in delivering the sessions and the Academic Coordinator is Dr Helen Macnaughtan from the Department of Finance and Management Studies.

For further information about the ETP please visit www.euetp.eu

SOAS Enterprise Team: www.soas.ac.uk/enterprise/



SOAS, University of London is the only Higher Education institution in Europe specialising in the study of Asia, Africa and the Near and Middle East.

SOAS is a remarkable institution. Uniquely combining language scholarship, disciplinary expertise and regional focus, it has the largest concentration in Europe of academic staff concerned with Africa, Asia and the Middle East.

On the one hand, this means that SOAS scholars grapple with pressing issues - democracy, development, human rights, identity, legal systems, poverty, religion, social change - confronting two-thirds of humankind while at the same time remaining guardians of specialised knowledge in languages and periods and regions not available anywhere else in the UK.

This makes SOAS synonymous with intellectual enquiry and achievement. It is a global academic base and a crucial resource for London. We live in a world of shrinking borders and of economic and technological simultaneity. Yet it is also a world in which difference and regionalism present themselves acutely. It is a world that SOAS is distinctively positioned to analyse, understand and explain.



At SOAS the understanding of Japanese language, history, and culture has been a core area of study since the university admitted its first students in 1917 as the School of Oriental Studies. SOAS' commitment to nurturing, refining, and expanding the study of Japan has only grown over the last century.

Last year, the numbers of first-year intake of students for BA Japanese and MA Japanese Studies combined were our highest yet. We currently have over five hundred undergraduates and over one hundred postgraduates at SOAS whose interdisciplinary studies include an aspect centred on Japan or Japanese. No other institution in Europe has such a high concentration of students with a focus on the field.

Furthermore, with more than twenty five academic specialists, SOAS houses one of the largest concentrations of Japan specialists outside of Japan. SOAS' Japan Research Centre (JRC) has been the forum for Japan-related research activities at SOAS since 1978 and continues to thrive.



CONTACT US

We welcome you to become part of the SOAS experience and invite you to learn more about us by exploring our website.

www.soas.ac.uk

Admissions

www.soas.ac.uk/admissions/

SOAS Library

www.soas.ac.uk/library/

Research

www.soas.ac.uk/research/

SOAS, University of London
Thornhaugh Street
Russell Square
London WC1H 0XG

現在SOASにて学部生500名余り、院生100名余りが日本及び日本語に焦点を当てて学際的に学んでおります。欧州における当分野の研究機関としては最大の学生数となります。

WHY CHOOSE SOAS?

SOAS attracts the brightest and most exceptional candidates for PhD research in all areas, and the study of Japan and Japanese is no exception. Year on year since 2009, the number of PhD students studying some aspect of Japan has held steady, with an average of nearly thirty research students each year.

CONNECT WITH US



The Japan Research Centre (JRC) is the forum for Japan related activities at SOAS, University of London. The principal role of the JRC is to promote, coordinate and disseminate information relating to, the academic study of Japan across the disciplines and to act as a resource for academic, governmental, non-governmental and business constituencies with an interest in Japan.

ADD US / LIKE US / STAY UP TO DATE / JOIN THE REGIONAL CENTRES COMMUNITY ONLINE



www.facebook.com/Japan.SOAS



twitter.com/soascentres



centres@soas.ac.uk

JRC ANNUAL REVIEW

You can download the current, and past, editions of the JRC Annual Review from:

www.soas.ac.uk/jrc/newsletter

KEEP UPDATED

If you would like to receive information about the Centre's activities and research news, send an email with your name to centres@soas.ac.uk

Please put JRC email distribution list in the subject header

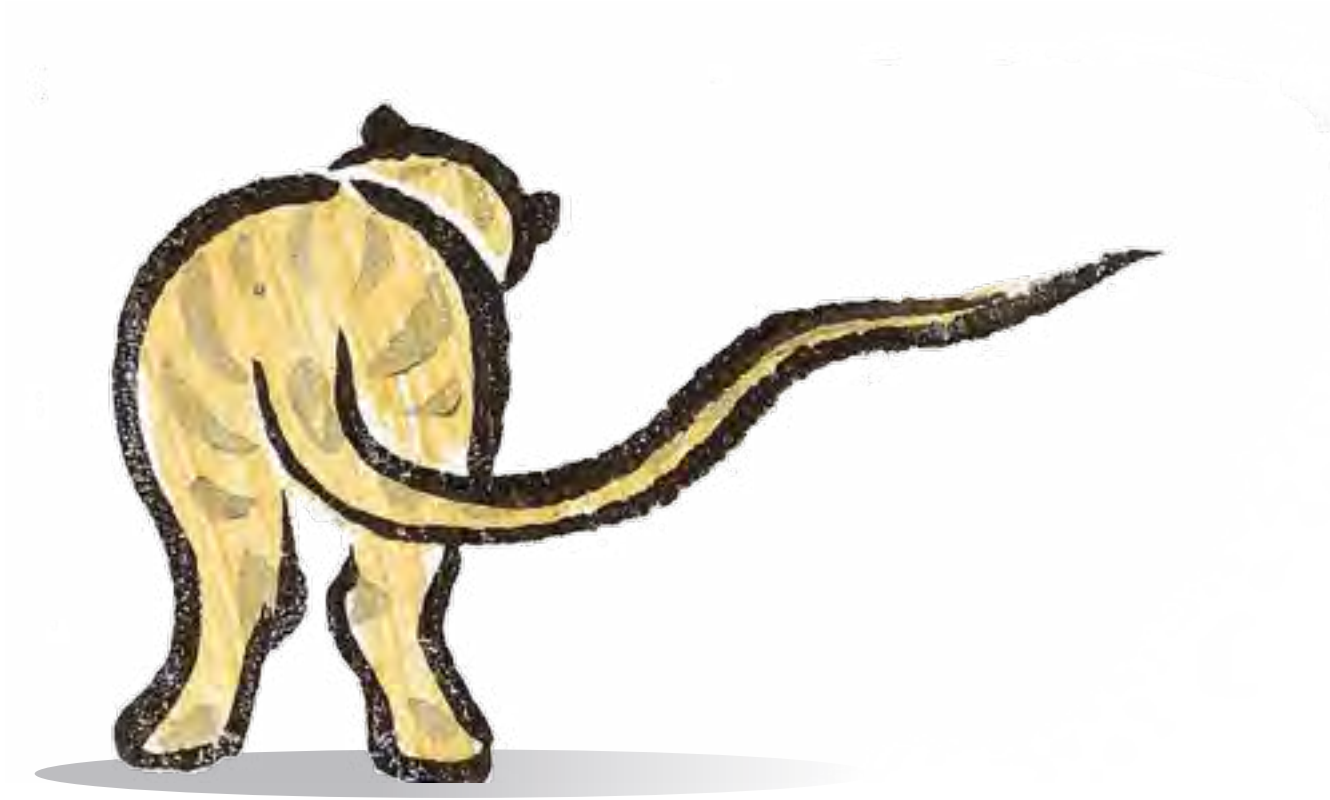
The Centres & Programmes Office is part of the Research and Enterprise Office (REO). This directorate at SOAS works across the School to secure external funding and income, to support research excellence and to facilitate knowledge transfer.

EVENTS

The JRC hosts a comprehensive programme of high quality and well respected interdisciplinary activities, including the weekly public seminars, international conferences, performances, film screenings, closed working groups, workshops and receptions

For a full events listing: www.soas.ac.uk/jrc/events





Thornhaugh Street
Russell Square
London WC1H 0XG

Tel: +44 (0)20 7637 2388

www.soas.ac.uk